





## 34 Kalang Road KIAMA HEIGHTS NSW

4  2  3 

You will be amazed by this substantial two storey full brick residence situated on a 1144sqm near level block. Enjoy one of the two extensive living areas both opening out onto entertainment areas with rural and ocean views.

All four bedrooms are generous in size with the main offering an ensuite.

Recently refurbished kitchen and lounge room and the double garage and carport will delight all the families with toys.

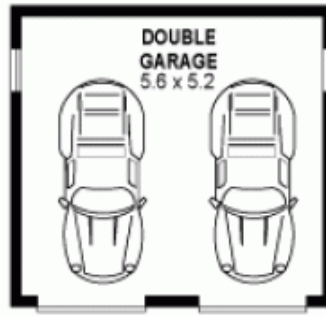
AUCTION on SITE - 14th December at 9:00am

**Land Size** : 1144 sqm

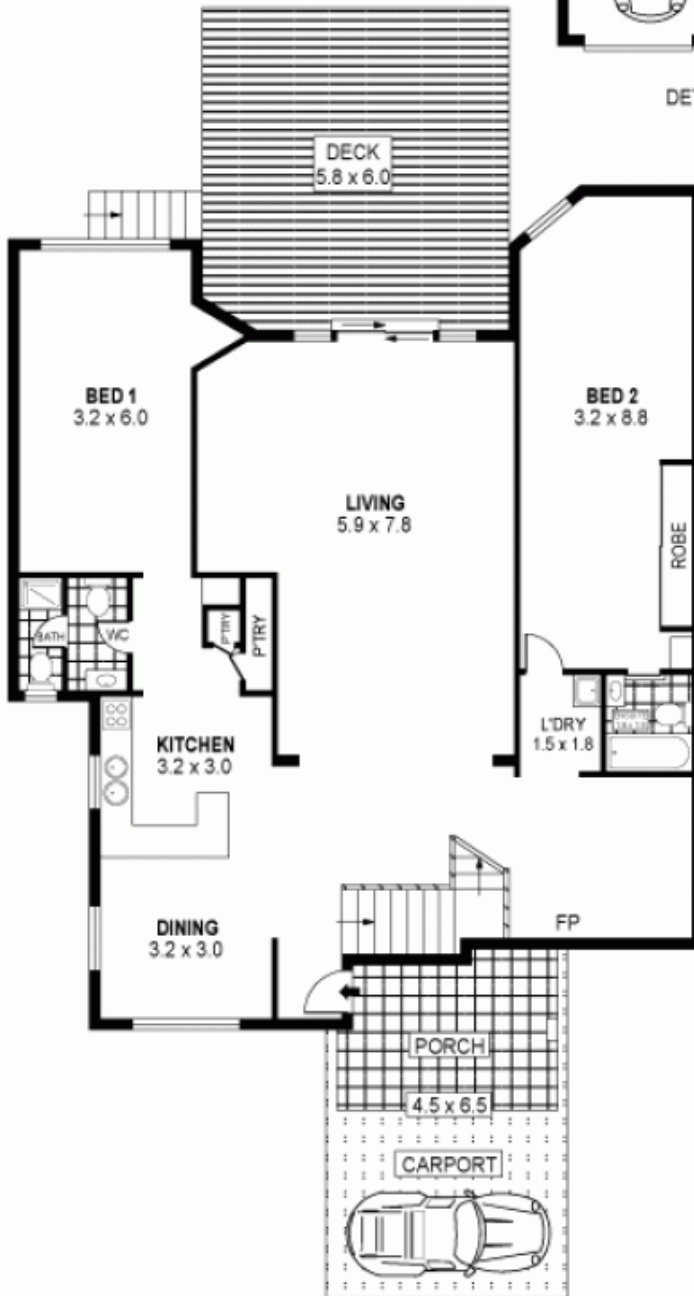
**View** : <https://www.jacksonresidential.com.au/6046685>



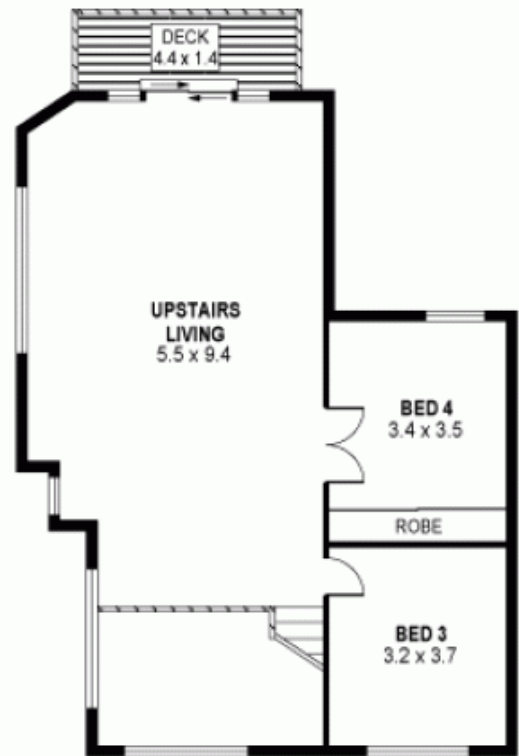
**Mark Jackson**  
02 4226 3000



DETACHED



GROUND LEVEL



LEVEL ONE



SCALE (METRES)

PLANS SHOWN ONLY INDICATIVE OF LAYOUT. DIMENSIONS ARE APPROXIMATE.  
Ref. No: 19963

INT : 229m<sup>2</sup>  
EXT : 68m<sup>2</sup>  
GARAGE : 29m<sup>2</sup>

34 KALANG ROAD

KIAMA HEIGHTS