



## 5 Mountview Avenue GWYNNEVILLE NSW

3 1 1

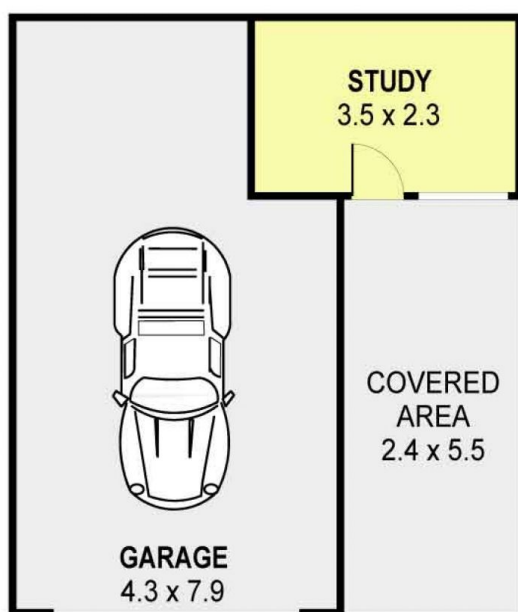
An abundance of charm and character flows through this full brick cottage, from the bay windows, high ceilings, picture rails and ornate cornices. Positioned directly across the road from Robinson Park in a quiet low traffic highly desirable street, yet the convenience of Wollongong CBD is just minutes away and the thriving Gwynneville strip spoils you with choice

**Land Size** : 519 sqm

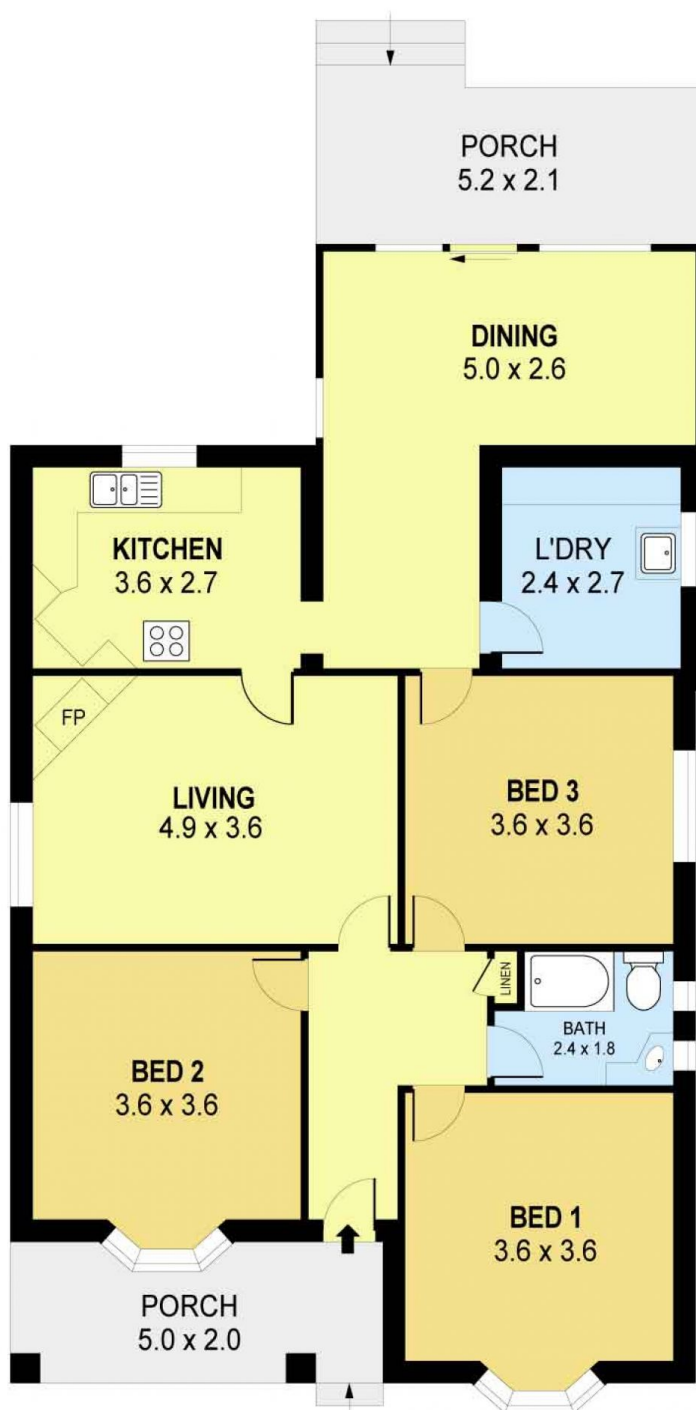
**View** : <https://www.jacksonresidential.com.au/6046690>



**Mark Jackson**  
02 4226 3000



DETACHED



0 1 2 3 4 5 **SCALE (METRES)**

PLANS SHOWN ONLY INDICATIVE OF LAYOUT. DIMENSIONS ARE APPROXIMATE.  
Ref. No: 21855

INT : 109m<sup>2</sup>  
EXT : 20m<sup>2</sup>  
GARAGE : 31m<sup>2</sup>

5 MOUNTVIEW AVENUE

GWYNNEVILLE