



7 Rosella Grove Farmborough Heights NSW

5 3 2

Privately and peacefully positioned in an idyllic cul-de-sac surrounded by high quality homes, this dual level family residence boasts a substantial layout with a choice of living areas.

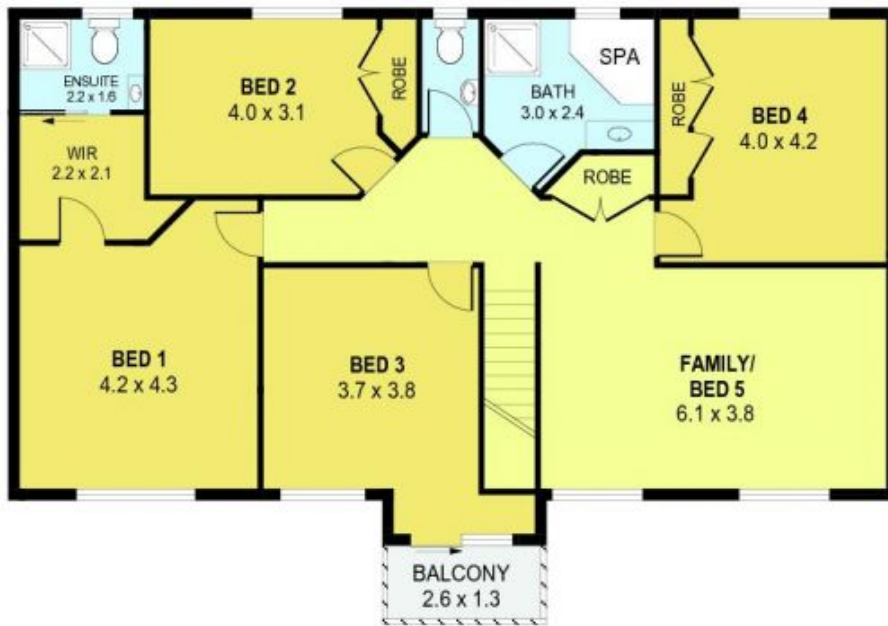
Pristinely kept and maintained, the interior includes formal lounge and dining areas, casual tiled living room, a sunken billiards room and an upstairs rumpus (or convert to 5th bedroom). The large kitchen is the heart of the home and is complete with stainless steel cooking appliances and a spacious dine-in breakfast bar.

On the second level you will find 4 (possibly 5) generous bedrooms all fitted with built-in wardrobes and the master suite enjoys a walk-through wardrobe leading to a private ensuite bathroom. The full main bathroom is appointed with separate corner spa bath and shower.

Price : \$ 715,000

Land Size : 561 sqm

View : <https://www.jacksonresidential.com.au/6046779>



SCALE (METRES)

PLANS SHOWN ONLY INDICATIVE OF LAYOUT. DIMENSIONS ARE APPROXIMATE.
Ref. No: 35966

INT : 284m²
EXT : 70m²
GARAGE : 37m²

7 ROSELLA GROVE

FARBOROUGH HEIGHTS