



10 Rachel Crescent Figtree NSW

3  1  1 

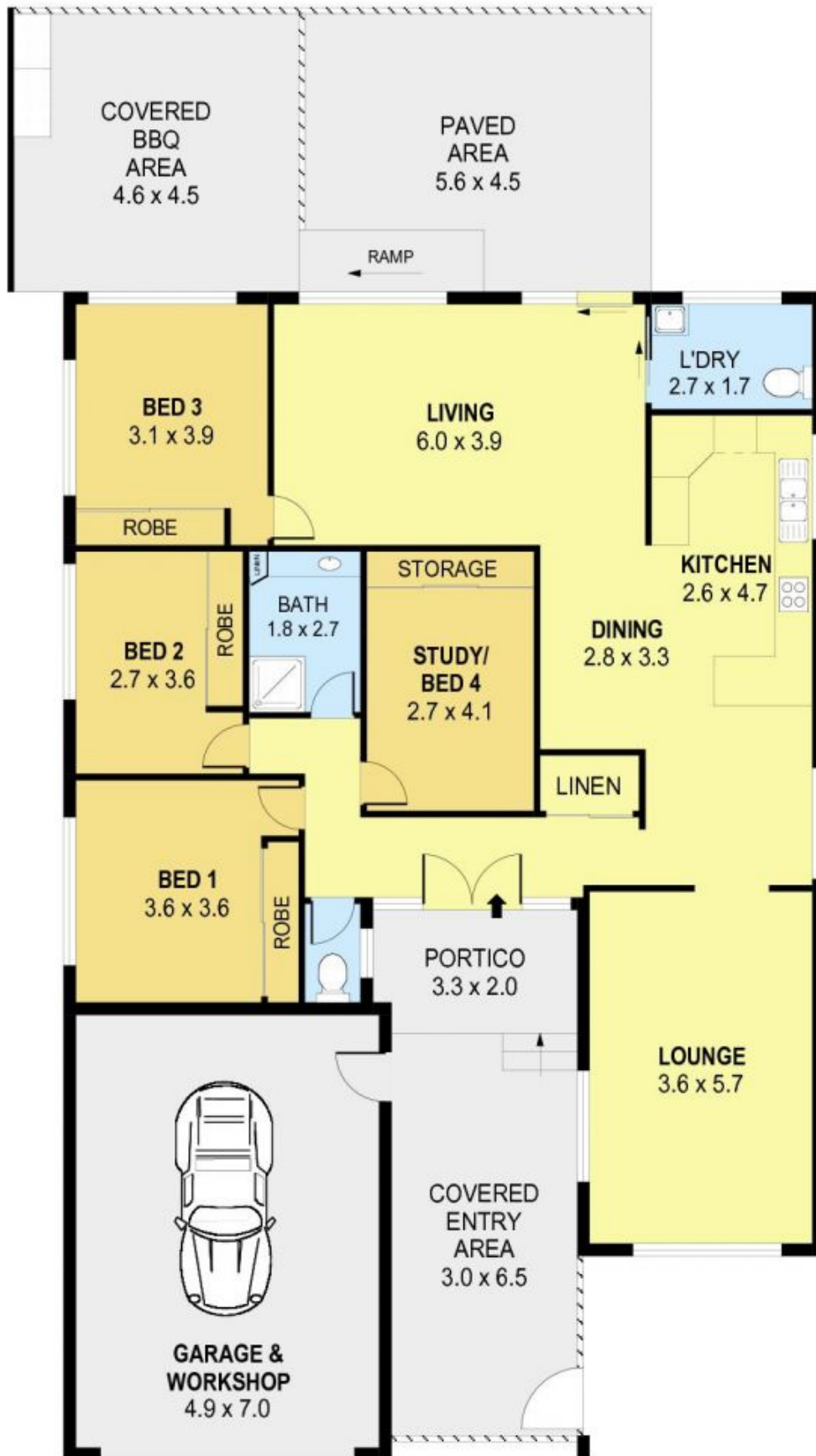
Nestled amid tidy and low maintenance grounds in an intimate cul-de-sac location, this family-friendly single level home has been designed to provide relaxed indoor/outdoor living close to quality schools, supermarkets, parks and is mere footsteps from local transport.

Price : \$ 580,000
Land Size : 601 sqm
View : <https://www.jacksonresidential.com.au/6046782>

A streamlined layout combines a choice of formal and casual living spaces with seamless outdoor flow onto a paved and covered all-weather entertaining area complete with built-in barbeque.

The orderly and well-kept kitchen, designed in neutral tones and beautifully offset by a slate tiled floor, is equipped with stainless steel wall oven, dual DishDrawer, 4 burner cooktop and adjoins the casual meals/dining room.

There are three well sized bedrooms that are all fitted with



0 1 2 3 4 5
SCALE (METRES)

PLANS SHOWN ONLY INDICATIVE OF LAYOUT. DIMENSIONS ARE APPROXIMATE.
 Ref. No: 36767

INT : 142m²
 EXT : 69m²
 GARAGE & WORKSHOP : 34m²

10 RACHEL CRESCENT

FIGTREE