

20 O'Donnell Drive Figtree NSW

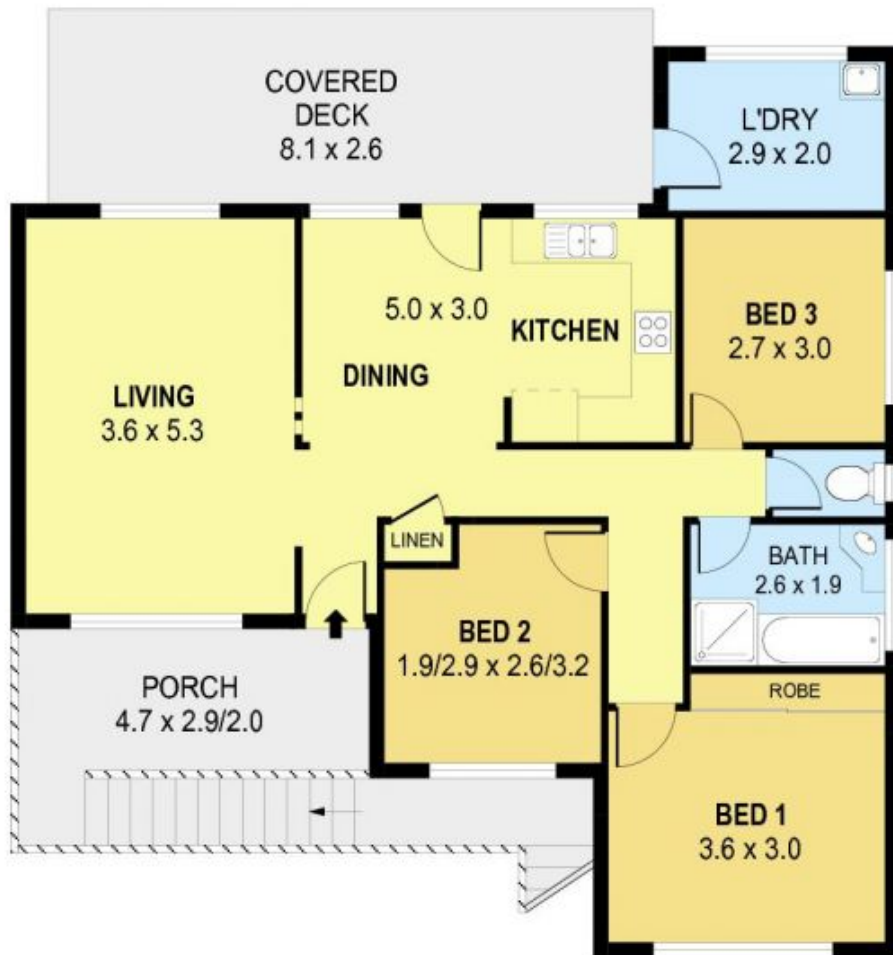
3  1  1 

Light and airy interiors ensure a seamless internal flow from this impeccably kept home of brick veneer construction. With a practical layout designed for ease of living, enjoy the modern kitchen complete with stone benches and stainless steel appliances that adjoins a family dining room and opens onto a generous sized covered entertaining deck for casual alfresco meals and get-togethers with family and friends.

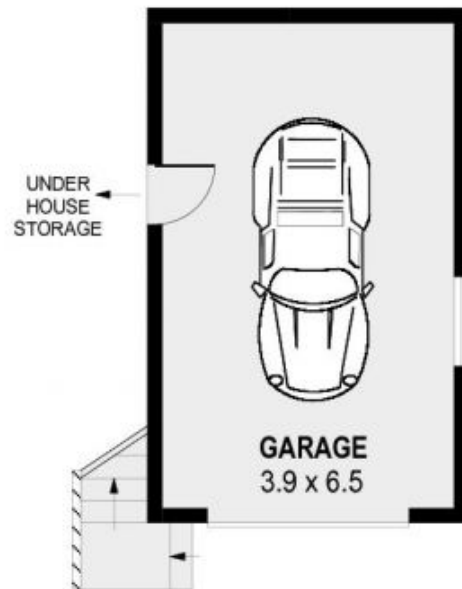
There are three bedrooms - the comfortably spaced master is complete with mirrored wardrobe, living area with reverse cycle split-system air, main bathroom with separate bath and shower, separate WC and a single lock-up garage with under house storage and additional off street parking.

Located close to public transport and exceptional convenience to amenities this great family home has low

Price : \$ 575,000
Land Size : 556 sqm
View : <https://www.jacksonresidential.com.au/6046>
796



GROUND LEVEL



LOWER LEVEL



PLANS SHOWN ONLY INDICATIVE OF LAYOUT. DIMENSIONS ARE APPROXIMATE.
Ref. No: 38130

INT : 89m²
EXT : 31m²
GARAGE : 25m²