



## 1 Goodbury Avenue Figtree NSW

3 1 2

A sense of community is fundamental to this well maintained family home positioned in a child friendly cul-de-sac.

Boasting three generous sized bedrooms - each complete with mirrored built in wardrobes and ceiling fans. On the first level a desirable open plan living/dining with timber floors and reverse cycle split system air conditioning, opens onto a spacious undercover entertainer's deck ideal for spending time with friends and family and an additional utility room (with separate external access) adorns the lower level. A well maintained kitchen with classical lines and stainless steel appliances (including dishwasher) is ideal for any family member wishing to pursue their culinary skills and the main bathroom is both spacious and well lit, complemented by a stone vanity top and separate WC.

An impressive double garage, storage/workplace, underground cellar and laundry complete with shower and

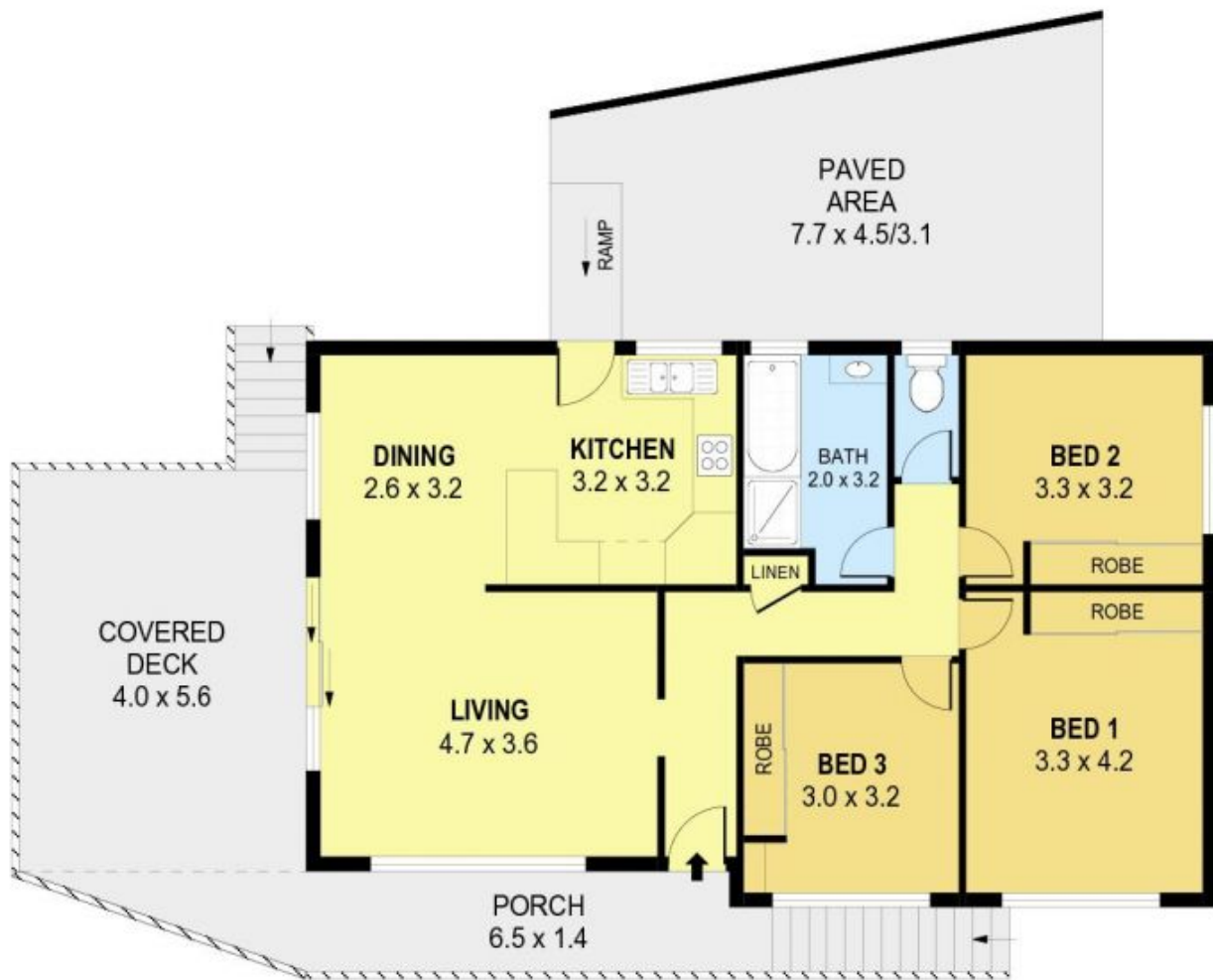
**Price** : \$ 710,000

**Land Size** : 584 sqm

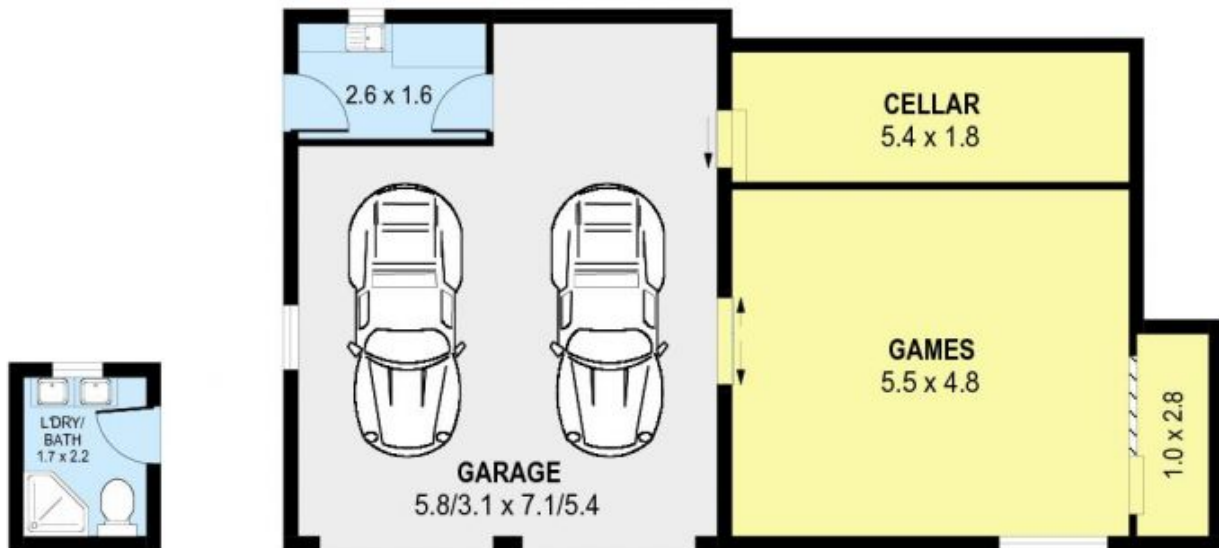
**View** : <https://www.jacksonresidential.com.au/6046845>



**Mark Jackson**  
02 4226 3000



GROUND LEVEL



LOWER LEVEL



SCALE (METRES)

PLANS SHOWN ONLY INDICATIVE OF LAYOUT. DIMENSIONS ARE APPROXIMATE.  
Ref. No 43958

INT : 89m<sup>2</sup>  
EXT : 61m<sup>2</sup>  
GARAGE : 41m<sup>2</sup>  
GAMES, CELLAR : 44m<sup>2</sup>

1 GOODBURY AVENUE

FIGTREE