

## 11 Catherine Street Gwynneville NSW

2 1 2

A two bedroom, full brick home which sits on a 998sqm parcel of land, this opportunity cannot be missed!

With the options to extend and renovate, add an extra dwelling or develop (subject to Wollongong Council), this property has serious potential. An exceptional location with Wollongong Uni, Wollongong Hospital and the CBD just minutes away, you can enjoy all that Gwynneville has to offer!

- Full brick house set on 998sqm
- 20m frontage
- 2 well sized bedrooms, each complete with BIW
- 2 car garage complete with workshop, and 2 x carport
- Large Backyard
- Generous size Living area with sunroom accessibility
- Easy access to F6

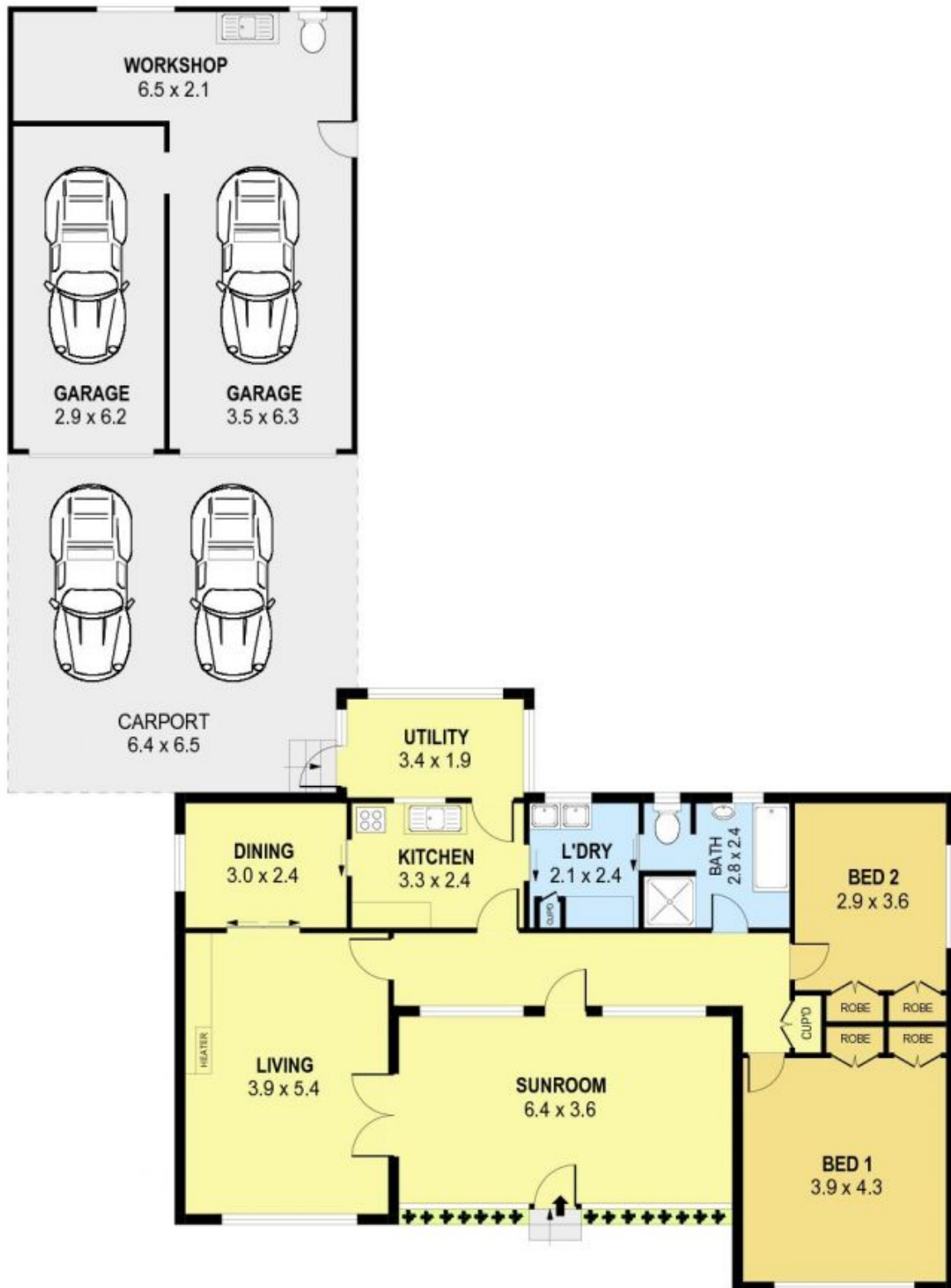
**Price** : \$ 960,000

**Land Size** : 998 sqm

**View** : <https://www.jacksonresidential.com.au/6046856>



**Mark Jackson**  
02 4226 3000



0 1 2 3 4 5 **SCALE (METRES)**

PLANS SHOWN ONLY INDICATIVE OF LAYOUT. DIMENSIONS ARE APPROXIMATE.  
Ref. No. 46191

INT : 126m<sup>2</sup>  
GARAGE : 55m<sup>2</sup>  
CARPORT : 42m<sup>2</sup>

11 CATHERINE STREET

GWYNNEVILLE