



30 Vickery Street Gwynneville NSW

3 1 1

Ideally located in the heart of charming Gwynneville, this is a renovator's dream! Only 200m from Gwynneville strip, where you can enjoy numerous cafes, shops, Gwynneville Bakery, Wiseman's bowling club and the excellent facilities at Beaton Park, as well as easy access to the free shuttle - for effortless travel.

Price : \$ 780,000
Land Size : 462 sqm
View : <https://www.jacksonresidential.com.au/6046859>

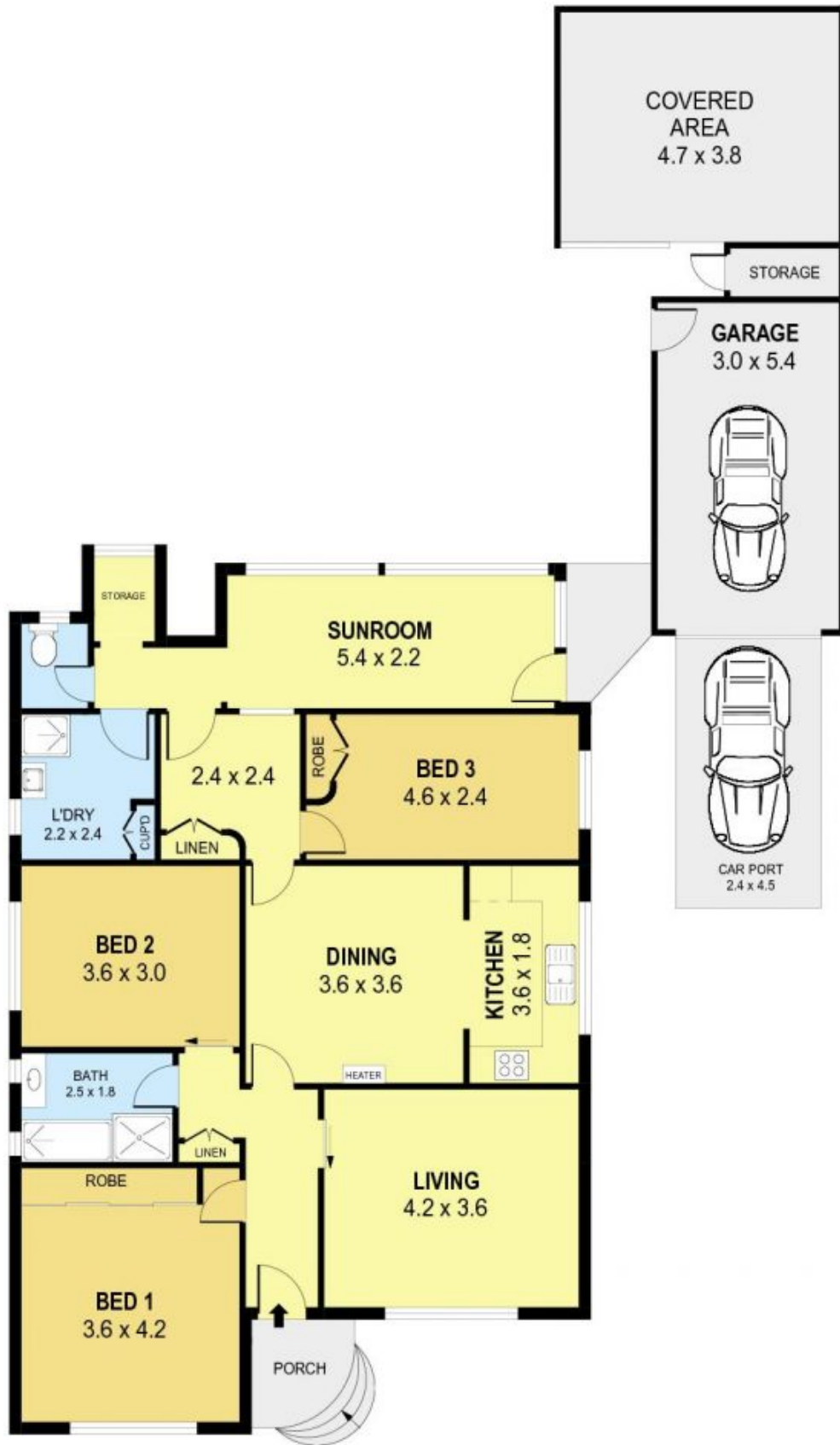
Set on 462sqm, directly opposite Wiseman Park Woodlands, this low maintenance property is a great opportunity for anyone wanting to create their own home.

It Features:

- 3 generous size bedrooms, 2 with BIW
- Large living area
- Detached garage and car port
- Copious amounts of storage



Mark Jackson
02 4226 3000



INT	: 115m ²
EXT	: 23m ²
GARAGE/ STORAGE	: 18m ²
CARPORT	: 9m ²



PLANS SHOWN ONLY INDICATIVE OF LAYOUT. DIMENSIONS ARE APPROXIMATE.
Ref No: 46181

30 VICKERY STREET

GWYNNEVILLE