



## 37 Gilmore Street West Wollongong NSW

4 2 2

This much-loved family home complete with large backyard and entertainers deck as well as four king sized bedrooms really is the quintessential family residence perfect for expanding families.

Constructed in 2005, this light filled property combines spacious living with easy flow from its living spaces to outdoor entertaining areas. With a multitude of living areas spanning two levels, embrace this modern family home and all it has to offer.

Revel in the close proximity to Wollongong hospitals, shopping, public transport and the short distance to Wollongong beach.

Features Include:

\* Large double garage including internal access with

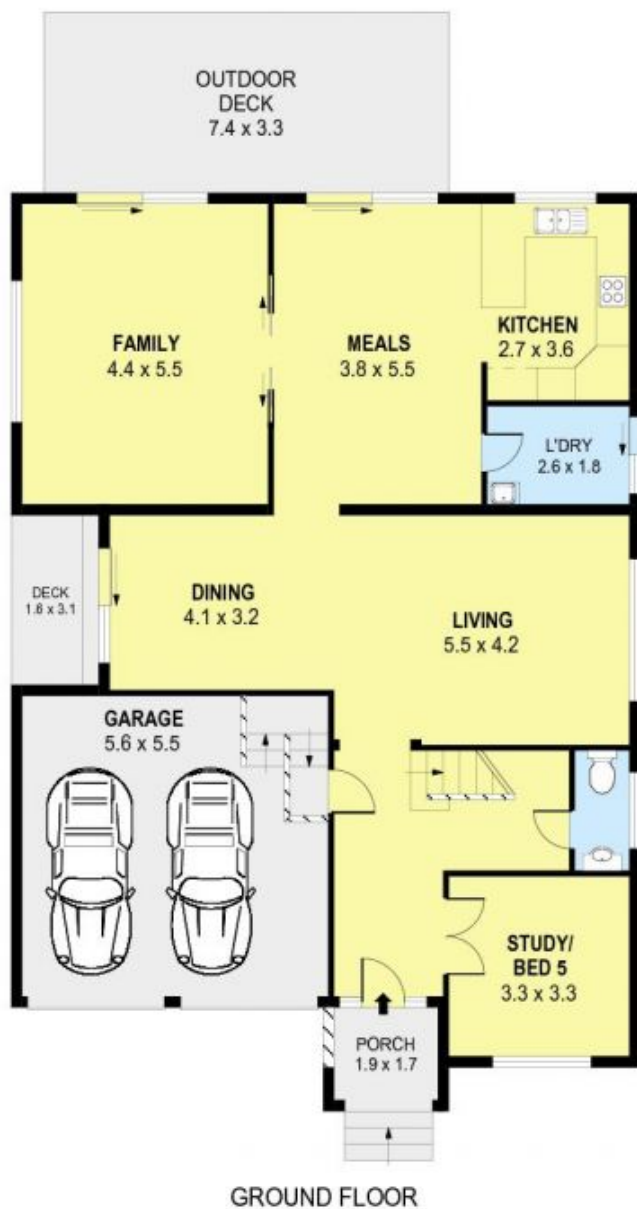
**Price** : \$ 1,110,000

**Land Size** : 706 sqm

**View** : <https://www.jacksonresidential.com.au/6046883>



**Mark Jackson**  
02 4226 3000



0 1 2 3 4 5  
SCALE (METRES)

PLANS SHOWN ONLY INDICATIVE OF LAYOUT. DIMENSIONS ARE APPROXIMATE.  
Ref. No. 48136

INT : 230m<sup>2</sup>  
EXT : 36m<sup>2</sup>  
GARAGE : 17m<sup>2</sup>

37 GILMORE STREET

WEST WOLLONGONG