



## 35 Gilmore Street West Wollongong NSW

3 1 1

Renovated to perfection, few homes throughout Wollongong have been able to recapture the true essence and character of the original construct.

A statement home in one of the inner-city's hot spots, a property you will be proud to call home.

### Features Include:

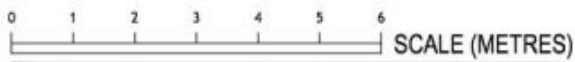
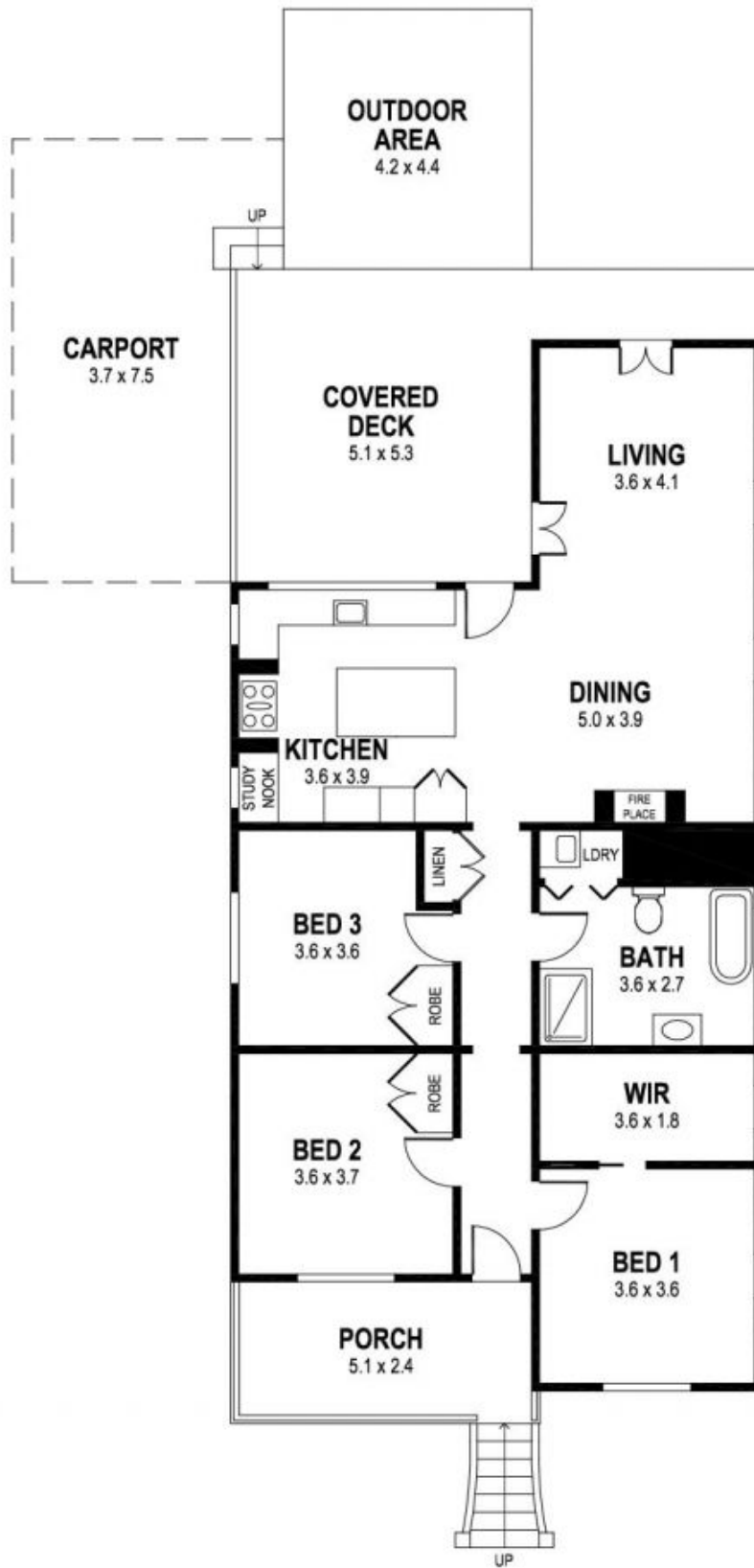
- \* Single level living
- \* Free flowing open plan
- \* Seamless Indoor/Outdoor living
- \* Ornate finishes from the front door though to the rear
- \* Light and bright
- \* Covered alfresco
- \* Second dwell potential, 3m side access, zoned R2
- \* A home with feeling
- \* Study nook close to kitchen

**Land Size** : 711 sqm

**View** : <https://www.jacksonresidential.com.au/6046886>



**Mark Jackson**  
02 4226 3000



PLANS SHOWN ONLY INDICATIVE OF LAYOUT. DIMENSIONS ARE APPROXIMATE.

INT : 123m<sup>2</sup>  
EXT : 29m<sup>2</sup>  
CARPORT : 62m<sup>2</sup>

35 GILMORE STREET

WEST WOLLONGONG