



13 Lawson Street Fairy Meadow NSW

4 3 2

Start creating your memories in this sophisticated residence. Delivering a superb living environment with premium finishes and an uplifting sense of light filled space.

Price : \$ 1,300,000

Land Size : 626 sqm

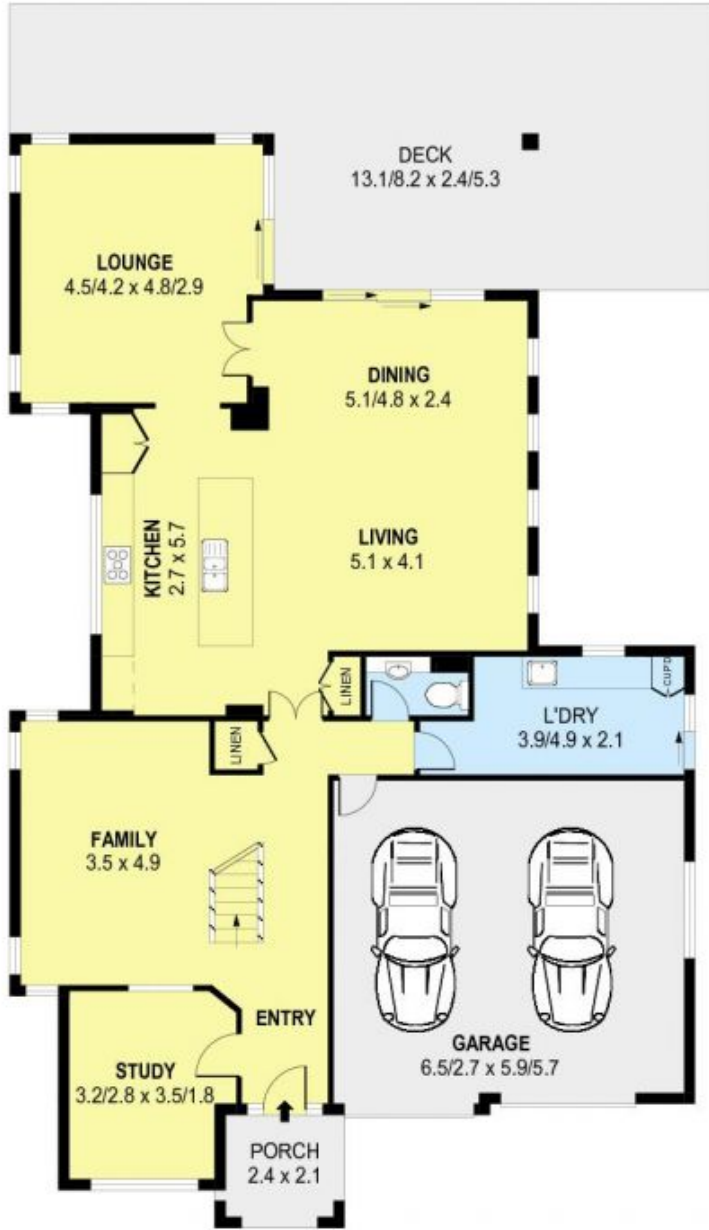
View : <https://www.jacksonresidential.com.au/6046965>

The lower level progresses effortlessly the moment you walk through the stylish entry. There's a large office at the front and a fabulous family room to relax in. The impressive kitchen has contemporary features with top of the range stainless steel appliances which extends to a roomy living and dining area that flows seamlessly to a wonderful timber deck providing an extensive entertaining area. Adding to this is a bright and light formal lounge room providing more space for effortless entertaining.



Mark Jackson
02 4226 3000

An expansive upper-level offers four queen sized bedrooms, including a superb master suite with a private



GROUND LEVEL



UPPER LEVEL



SCALE (METRES)

PLANS SHOWN ONLY INDICATIVE OF LAYOUT. DIMENSIONS ARE APPROXIMATE.
Ref. No: 59166

INT : 232m²
EXT : 68m²
GARAGE : 38m²

13 LAWSON STREET

FAIRY MEADOW