



6/25 Corrimal Street Wollongong NSW

2  1  1 

Stroll to Cliff Road from this stylish 2 bedroom apartment.

The light filled living area opens up to a sun drenched east facing balcony with ocean glimpses. Adjoining is a smart galley style kitchen filled with natural light. Offering plenty of storage it includes a washing machine and opens to a handy butler's pantry.

The bedrooms are cleverly positioned on either side of the living area for added privacy, both have built-ins and a balcony off the west facing bedroom adds to the natural light.

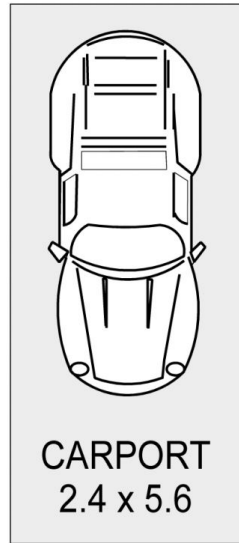
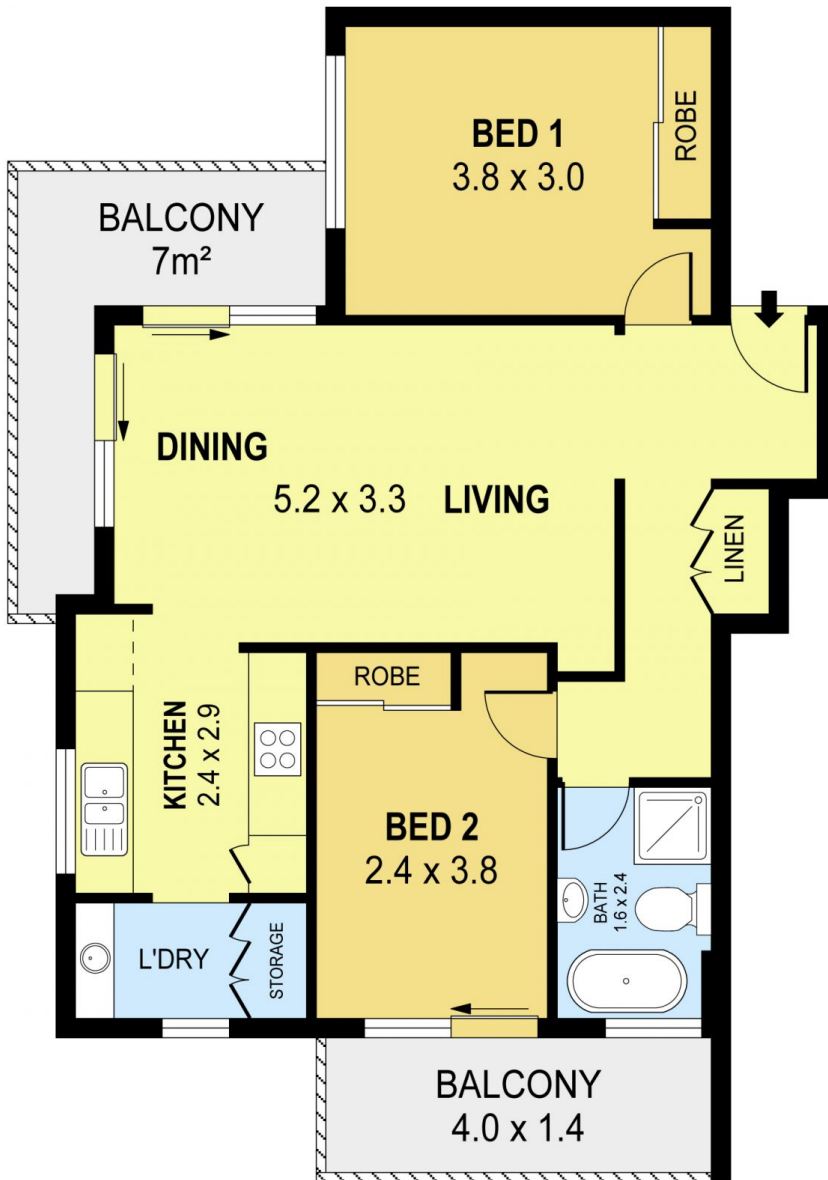
A trendy bathroom provides the finishing touch, separate shower and a deep free standing bath to soak in after a long day.

Price : \$ 560,000

View : <https://www.jacksonresidential.com.au/6046968>



Mark Jackson
02 4226 3000



PLANS SHOWN ONLY INDICATIVE OF LAYOUT. DIMENSIONS ARE APPROXIMATE.
Ref. No: 58063

INT : 60m²
EXT : 13m²
CARPORT : 13m²

UNIT 6, 25 CORRIMAL STREET

WOLLONGONG