



**4/206-208 Gipps Road Gwynneville NSW**

**3  2  2 **

Superbly positioned in the heart of the village, this well presented 3 bedroom townhouse is set quietly at the back of the complex.

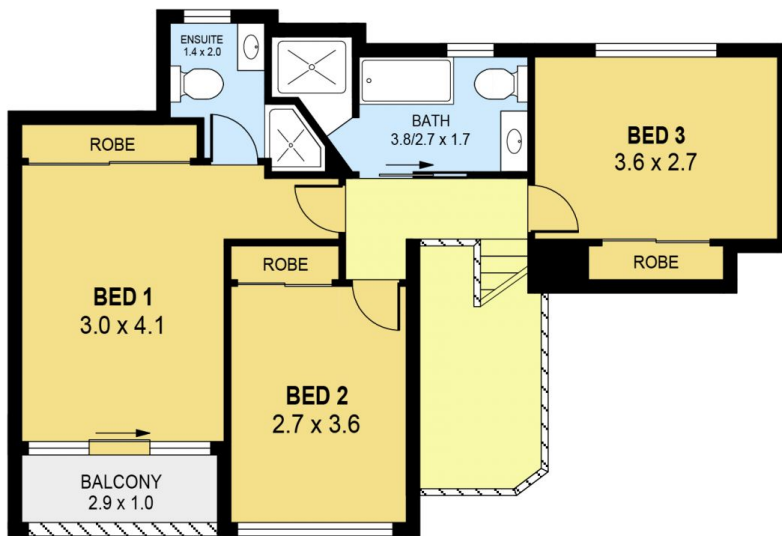
**View :** <https://www.jacksonresidential.com.au/6046982>

Why you should lease me:

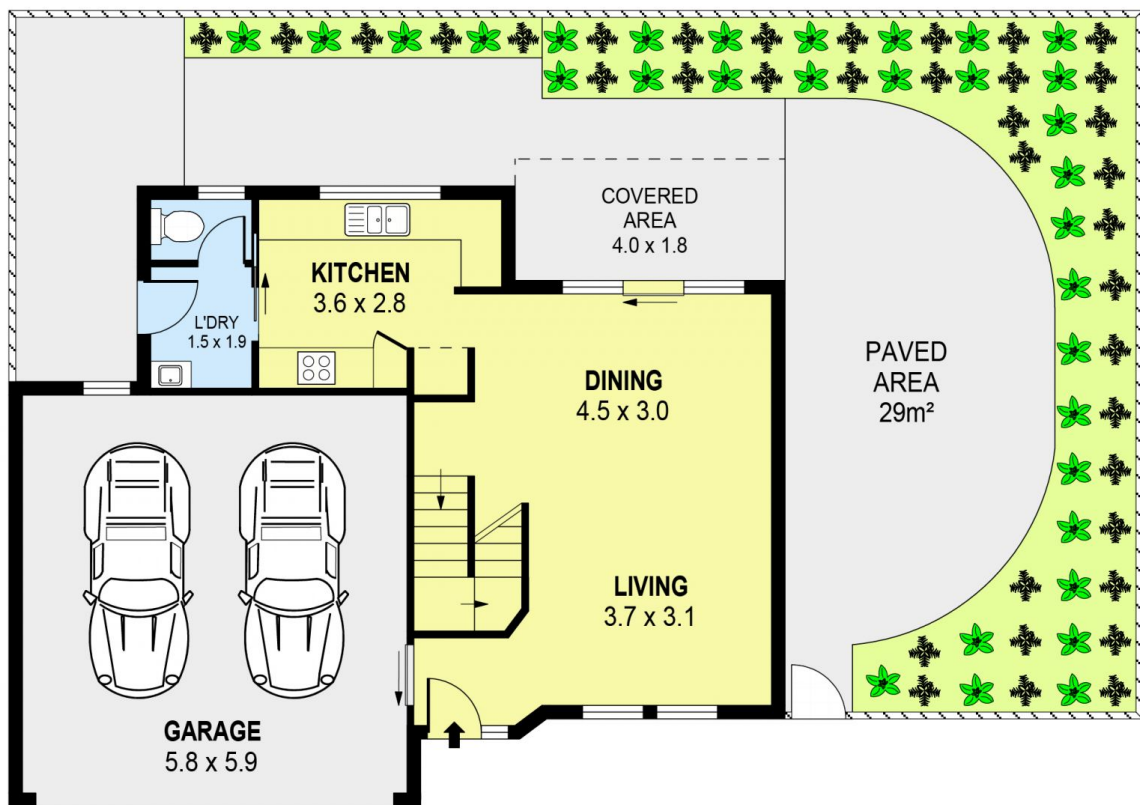
- \* Galley kitchen with stainless appliances
- \* Open plan living with timber floors and air conditioner
- \* Ensuite to air conditioned master bedroom
- \* Air conditioned second bedroom
- \* BIW and floating floors to all bedrooms
- \* Low maintenance courtyard
- \* W/C downstairs for guests
- \* Remote controlled double garage with internal access
- \* Located close to schools, cafes, UOW, hospital, beaches and CBD



**Annette Allen**  
**02 4226 3000**



UPPER LEVEL



GROUND LEVEL



PLANS SHOWN ONLY INDICATIVE OF LAYOUT. DIMENSIONS ARE APPROXIMATE.  
Ref. No: 58115

INT : 97m<sup>2</sup>  
EXT : 64m<sup>2</sup>  
GARAGE : 34m<sup>2</sup>

UNIT 4, 206-208 GIPPS ROAD

GWYNNEVILLE