






## 10 Attunga Street Keiraville NSW

6  3  1 

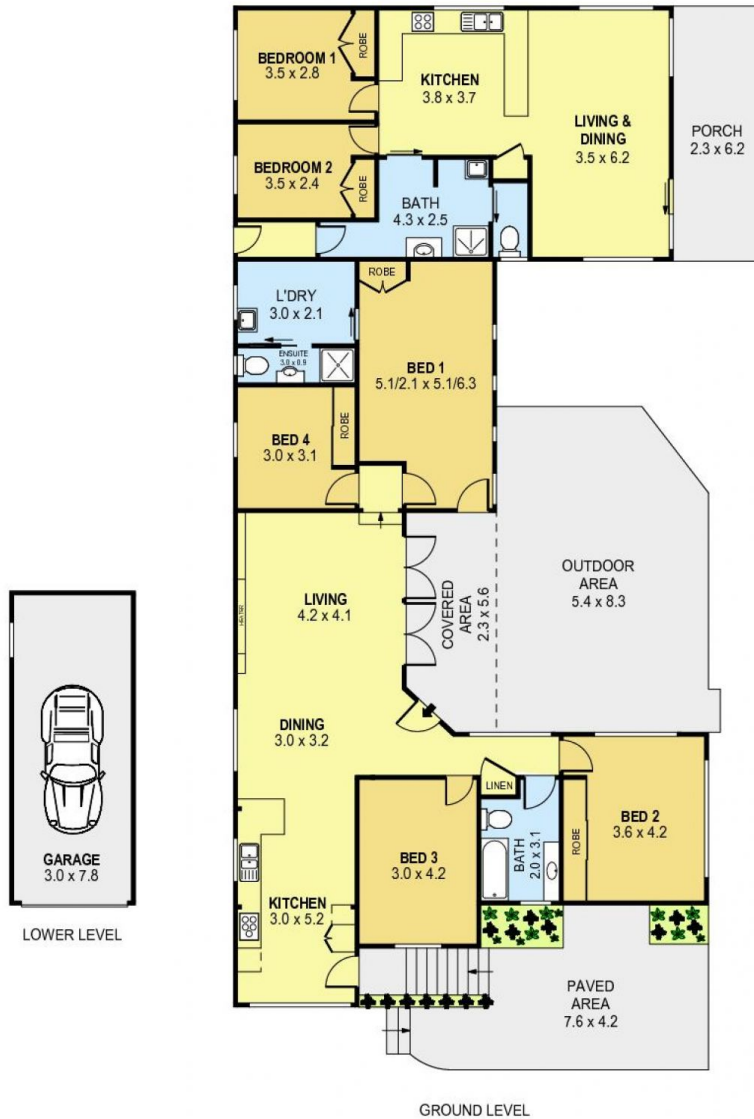
Are you looking for a versatile home for the growing family? Wanting extra space for the extended family? Have you ever looked at your teenagers scattered mess and wished they had their own place? We have the solution - a property that can be used as one home or perfectly split into two self contained homes with their own entries, gardens and amenities.

The character filled main residence has an expansive kitchen with timber benchtops - loads of workspace - stainless steel gas appliances and a dishwasher. A generous open plan living and dining area flows through bi-fold doors to a private stone courtyard offering a lovely view of the manicured gardens - perfect for entertaining. 4 bedrooms with built-ins, 2 bathrooms, spacious laundry, timber floorboards throughout, air-conditioning and single lock up garage.

**Price** : \$ 840,000  
**Land Size** : 715 sqm  
**View** : <https://www.jacksonresidential.com.au/6047004>



**Mark Jackson**  
02 4226 3000



0 1 2 3 4 5  
SCALE (METRES)

PLANS SHOWN ONLY INDICATIVE OF LAYOUT. DIMENSIONS ARE APPROXIMATE.  
Ref. No. 60529

INT : 197m<sup>2</sup>  
EXT : 94m<sup>2</sup>  
GARAGE : 23m<sup>2</sup>

10 ATTUNGA STREET

KEIRAVILLE