

1/24 Sheppard Street West Wollongong NSW

2  1  1 

A well-kept, ground floor unit with open plan living.

- * Open plan living / dining
- * Ground Floor with parking space at your door
- * Easy access to M1 both north and southbound
- * Combination of Timber floor boards and carpet
- * Large Timber windows throughout the unit, allowing ample sunlight and fresh air
- * Recently refurbished kitchen
- * Tidy Bathroom
- * Sorry no pets allowed

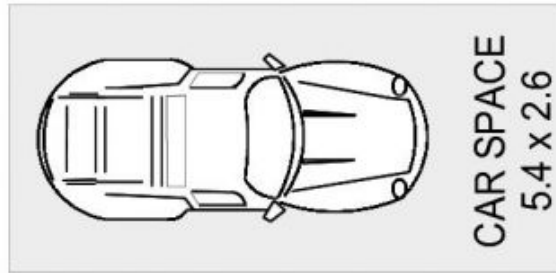
* PLEASE NOTE FURNITURE IS FOR ADVERTISING PURPOSES IT IS ONLY NOT INCLUDED WITH THE PROPERTY*

Land Size : 702 sqm

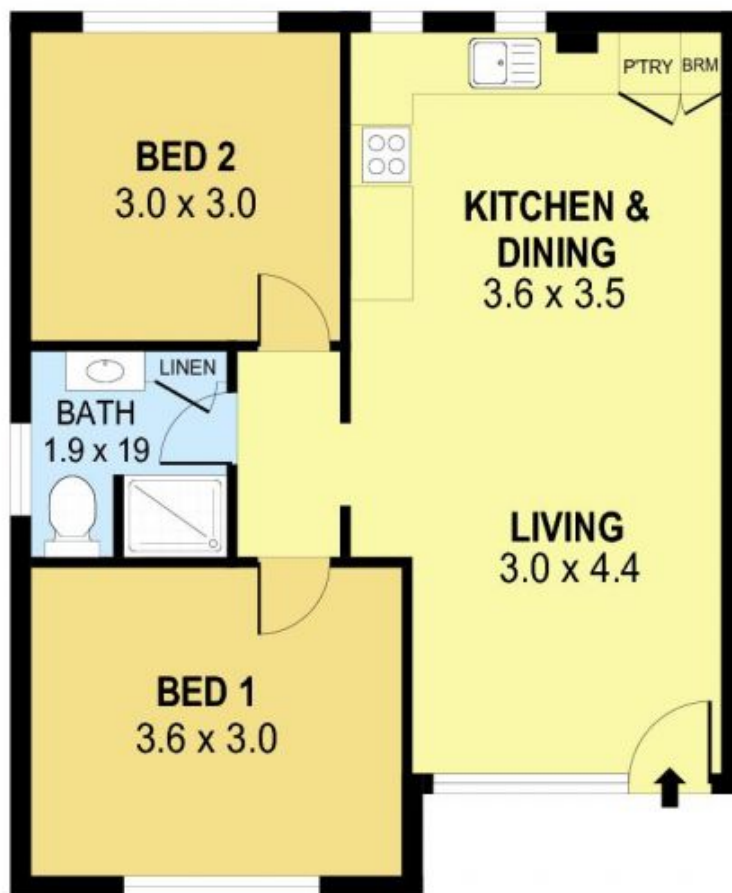
View : <https://www.jacksonresidential.com.au/6047043>



Annette Allen
02 4226 3000



DETACHED



PLANS SHOWN ONLY INDICATIVE OF LAYOUT. DIMENSIONS ARE APPROXIMATE.
Ref. No: 47058

INT : 52m²
CAR SPACE : 14m²

UNIT1, 24 SHEPPARD STREET

WEST WOLLONGONG