



14/2 Edward Street Wollongong NSW

3  2  2 

In a tightly held and peaceful pocket this spacious apartment with panoramic mountain views and a sea breeze offers ease of living perfect for those seeking lifestyle and convenience. Hard to believe it's oh so close to the social hotspot and café scene.

**Price** : \$ 750,000

**View** : <https://www.jacksonresidential.com.au/6047104>

Highlights:

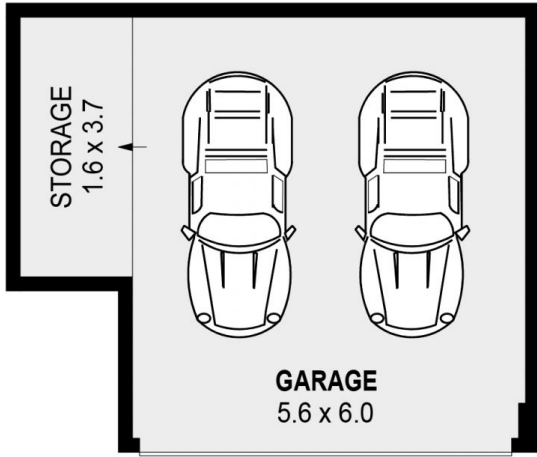
- ? North west facing and as big as a house
- ? Views from every room
- ? Sizable kitchen
- ? Substantial open plan living opening to balcony
- ? Large master suite with private balcony
- ? 3-way main bathroom
- ? Well maintained garden complex
- ? Internal laundry
- ? Secure building



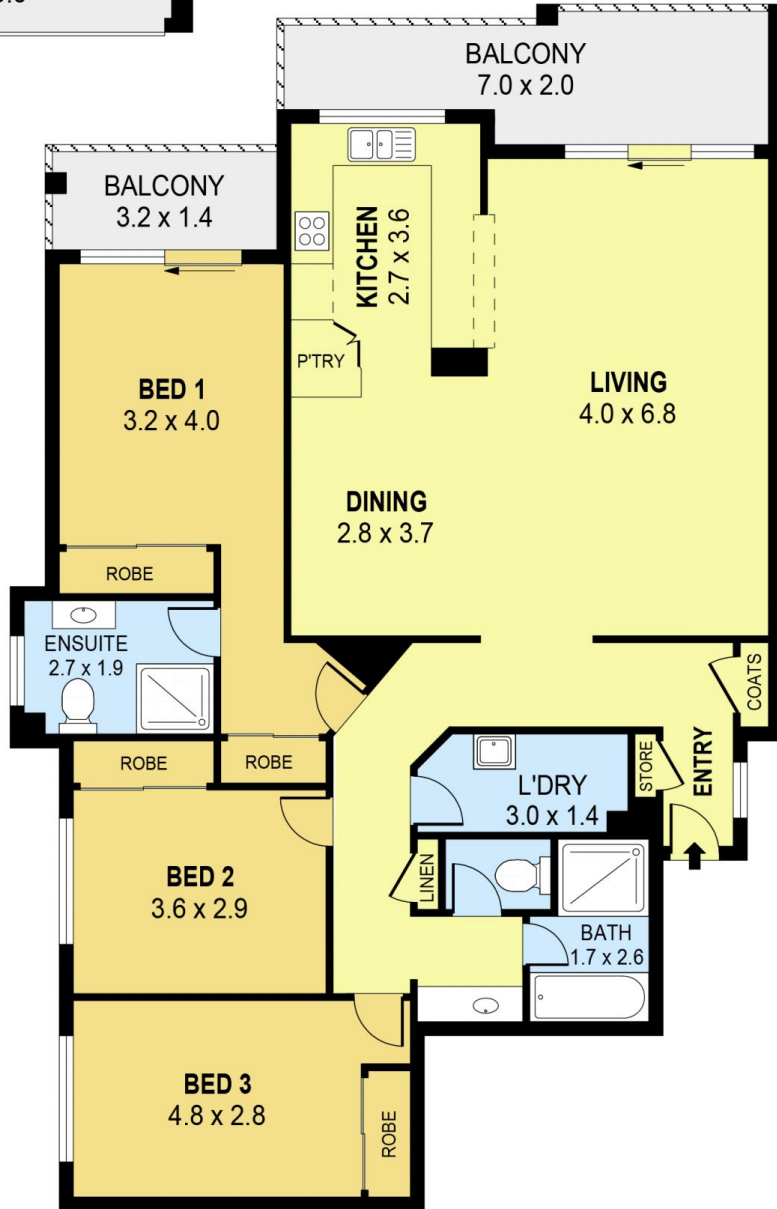
**Mark Jackson**  
02 4226 3000



**MarkDeleted MasonDeleted**



DETACHED



PLANS SHOWN ONLY INDICATIVE OF LAYOUT. DIMENSIONS ARE APPROXIMATE.  
Ref. No: 70059

INT : 128m<sup>2</sup>  
EXT : 15m<sup>2</sup>  
GARAGE : 40m<sup>2</sup>

UNIT 14, 2 EDWARD STREET

WOLLONGONG