



2/24 Berkeley Road Gwynneville NSW

2 1 1

Located in a small complex of three, this two bedroom villa is ideally situated. Featuring light filled living areas opening to the courtyard garden. Well planned kitchen with stainless steel appliances and plenty of storage. A level walk to all local amenities adds to the appeal.

Highlights:

- North facing wrap around courtyard
- Internal access from the single garage
- Good size bedrooms
- Large living area
- Reverse cycle air conditioner
- Gas hot water
- Gwynneville Village
- Free Gong shuttle
- Wiseman Park Bowling Club
- Wollongong Tennis Club

Price : \$ 600,000

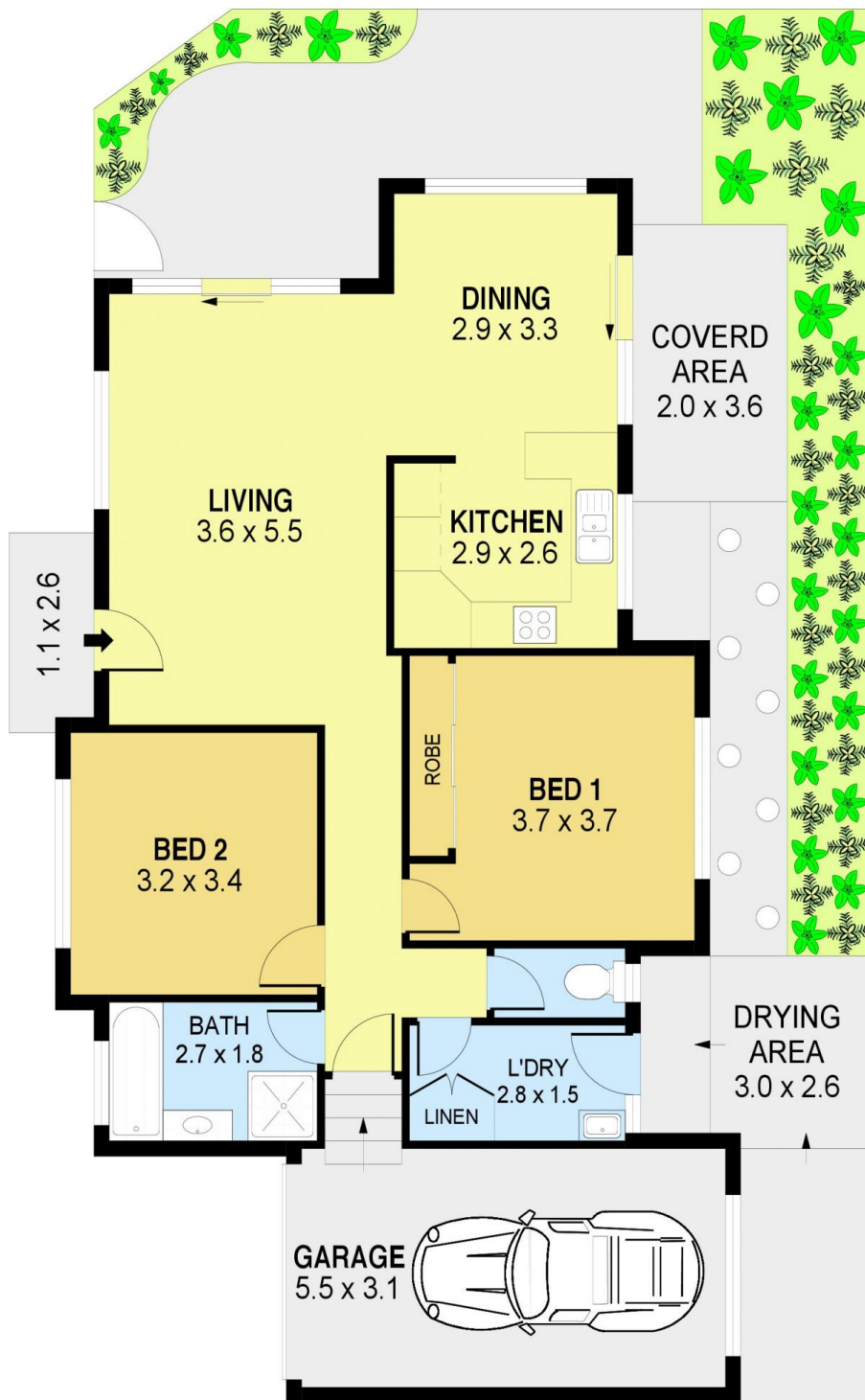
View : <https://www.jacksonresidential.com.au/6047240>



Mark Jackson
0418 603 447



MarkDeleted MasonDeleted



0 1 2 3 4
SCALE (METRES)

PLANS SHOWN ONLY INDICATIVE OF LAYOUT. DIMENSIONS ARE APPROXIMATE.
Ref. No: 81380

INT : 81m²
EXT : 17m²
GARAGE : 18m²

UNIT 2, 24 BERKELEY ROAD

GWYNNEVILLE