



Level 1/3/36a Smith Street Wollongong NSW

2 1 1

This north-east facing apartment boasts an large outdoor terrace perfect for alfresco entertaining.

View : <https://www.jacksonresidential.com.au/6047287>

Features:

- * Two generous sized bedrooms main with large BIW
- * Renovated kitchen
- * Stainless Steel appliances
- * Reverse cycle air conditioner
- * Internal laundry
- * Security Building
- * Underground parking with lift access
- * Walk to beach and CBD
- * Walk to schools and transport
- * NBN ready

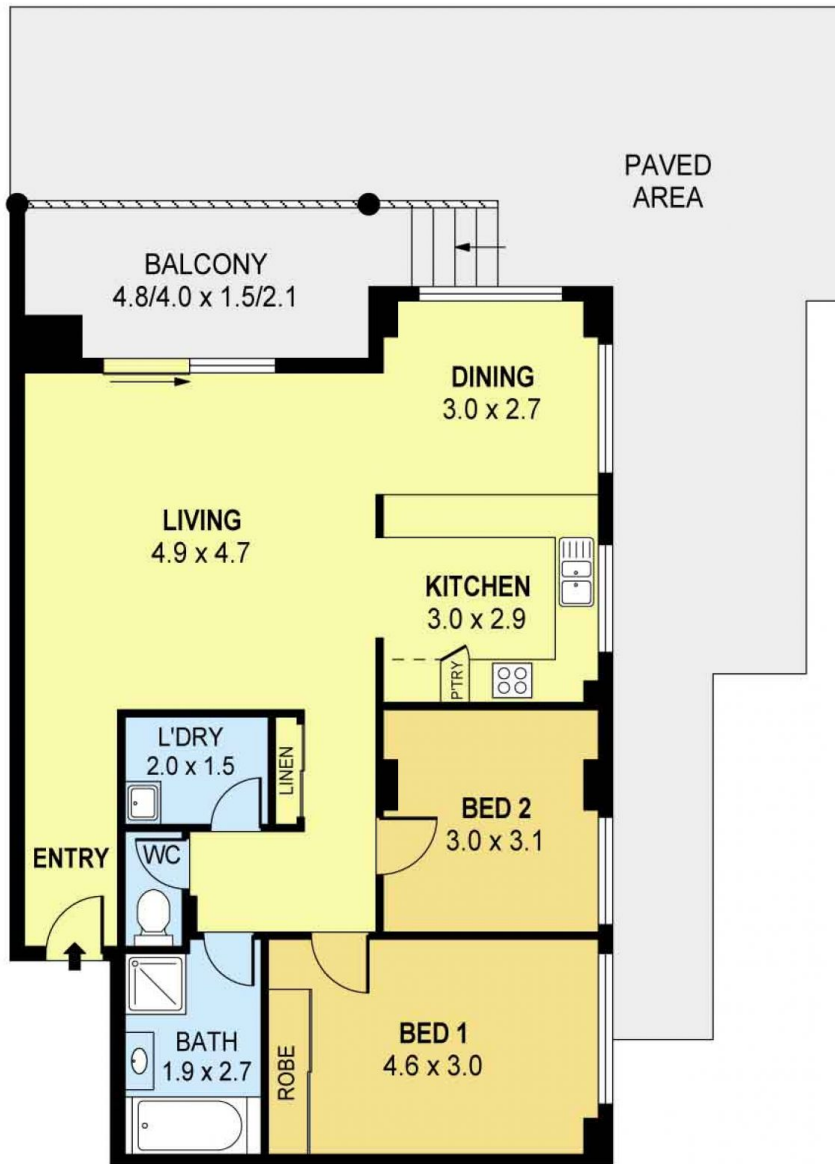


Karen White
02 4226 3000



Annette Allen
02 4226 3000

DISCLAIMER:
FURNITURE IS FOR DISPLAY ONLY THE PROPERTY IS



INT : 86m²
 EXT : 10m²

PLANS SHOWN ONLY INDICATIVE OF LAYOUT. DIMENSIONS ARE APPROXIMATE.
 Ref. No: 26676

UNIT 3, 36A SMITH STREET

WOLLONGONG