



224 Gipps Road Gwynneville NSW

4 3 4

Perfectly positioned on the cusp of the village, this family home radiates sophistication and quality. Featuring generous proportions and a versatile floorplan offering multiple living areas. An impressive kitchen includes top notch appliances and an abundance of storage. The main bedroom is a sanctuary, the other three are sizable and all 3 bathrooms are sublime. Sparkling pool, easy care gardens, garaging for 3 cars. The location and sumptuous accommodation make this property unique.

Highlights:

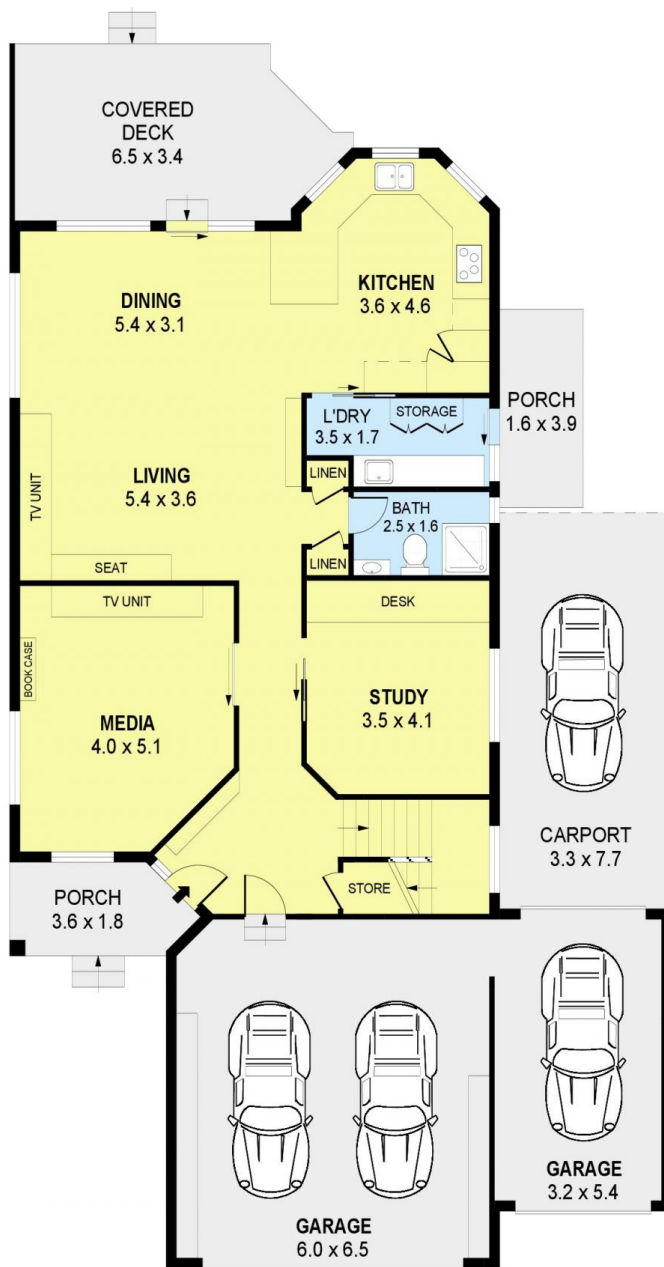
- * Contemporary home of substantial proportion
- * 3 living areas plus study
- * Chef's kitchen with European appliances
- * King sized main bedroom with his & hers walk-in robes & glamorous ensuite
- * 3 other bedrooms are queen sized

Land Size : 598.8 sqm

View : <https://www.jacksonresidential.com.au/6230938>



Mark Jackson
02 4226 3000



GROUND LEVEL



UPPER LEVEL



SCALE (METRES)

PLANS SHOWN ONLY INDICATIVE OF LAYOUT. DIMENSIONS ARE APPROXIMATE.
Ref. No: 86346

INT : 259m²
EXT : 31m²
GARAGES : 57m²
CARPORT : 25m²

224 GIPPS ROAD

GWYNNEVILLE