



8 Crawford Avenue Gwynneville NSW

4 2 1

Family home in a great street. Separate lounge and dining areas, family room, 4 bedrooms, 2 bathrooms. Timber floors, kitchen with ample storage, easy care gardens. Walk to bus, North Gong station, TAFE, UNI and Beaton Park. There so much to love here.

Price : \$ 960,000

Land Size : 485 sqm

View : <https://www.jacksonresidential.com.au/6324472>

Highlights:

Timber floors

4 bedrooms or 3 beds/study

Kitchen with lots of cupboard space

2 bathrooms

Sunroom

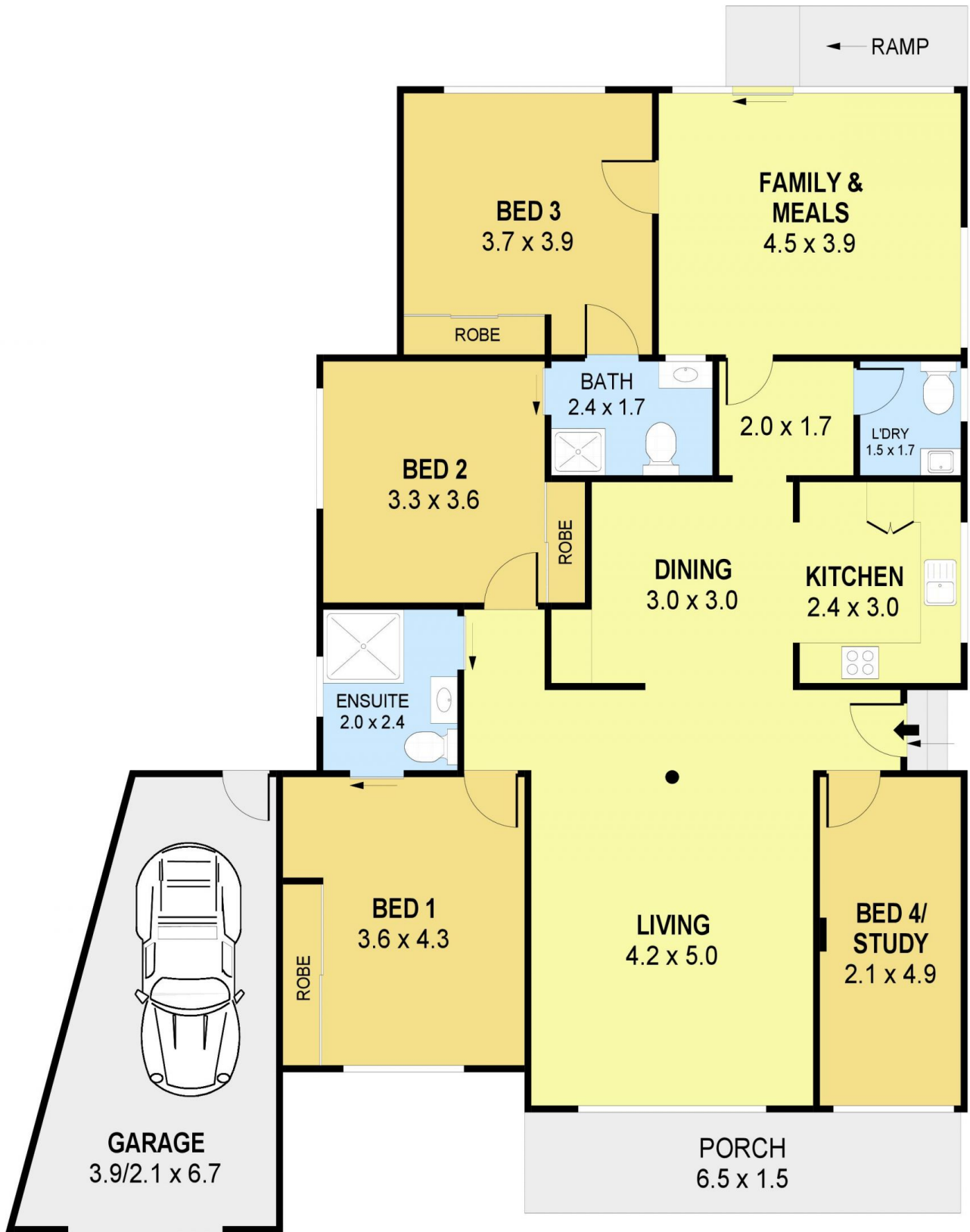
Extra w/c in laundry

Single lock up garage

Great location



Mark Jackson
02 4226 3000



PLANS SHOWN ONLY INDICATIVE OF LAYOUT. DIMENSIONS ARE APPROXIMATE.
Ref. No: 87070

INT : 138m²
EXT : 11m²
GARAGE : 20m²

8 CRAWFORD AVENUE

GWYNNEVILLE