



16 Lucinda Street Gwynneville NSW

3  1  1 

Three bedroom cottage on a level 518.5 sqm in the suburb's Golden Triangle. This tightly held neighbourhood is quiet, leafy and loved by its residents. Walk to train, free shuttle bus and of course to the fabulous coffee shops and restaurants in the village. Close to schools and motorway. A good opportunity to renovate, rebuild or invest.

Land Size : 518.5 sqm

View : <https://www.jacksonresidential.com.au/6380362>

Highlights:

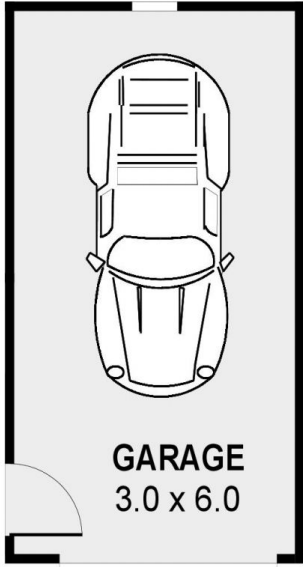
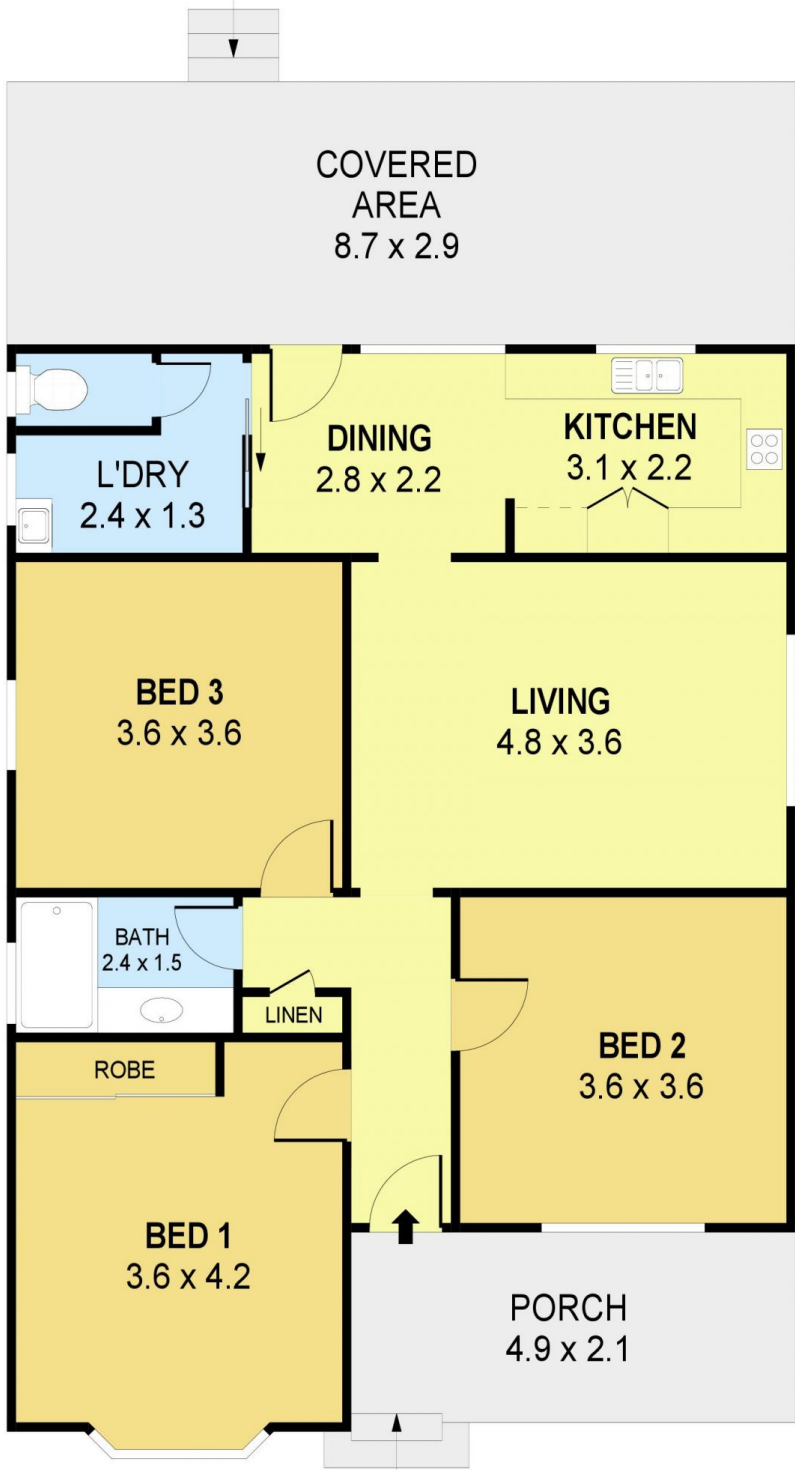
- Great location
- Built-ins to main bedroom
- Large covered back verandah
- Ornate cornices
- Level 518.5 sqm block



Mark Jackson
02 4226 3000



Robyn Elliott
4226 3000



DETACHED



PLANS SHOWN ONLY INDICATIVE OF LAYOUT. DIMENSIONS ARE APPROXIMATE.
Ref. No: 88077

INT : 90m²
EXT : 35m²
GARAGE : 19m²

16 LUCINDA STREET

GWYNNEVILLE