



**7/12 Catherine Street Gwynneville NSW**

**2**  **1**  **1** 

Close to all amenities

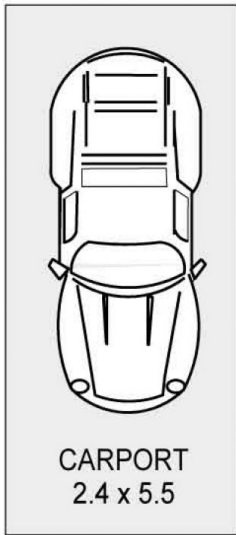
- \* 2 bedroom
- \* internal laundry
- \* L shaped lounge/dining
- \* balcony off living room
- \* timber look floors
- \* Combined shower/bath
- \* Covered car space
- \* Close to village, shops, restaurants, schools, bus, train

To apply please visit <https://cutt.ly/1nW8QdN>  
We do not accept 1form applications

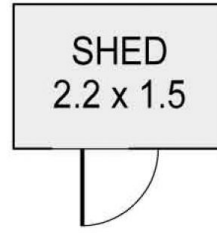
**View** : <https://www.jacksonresidential.com.au/6456883>



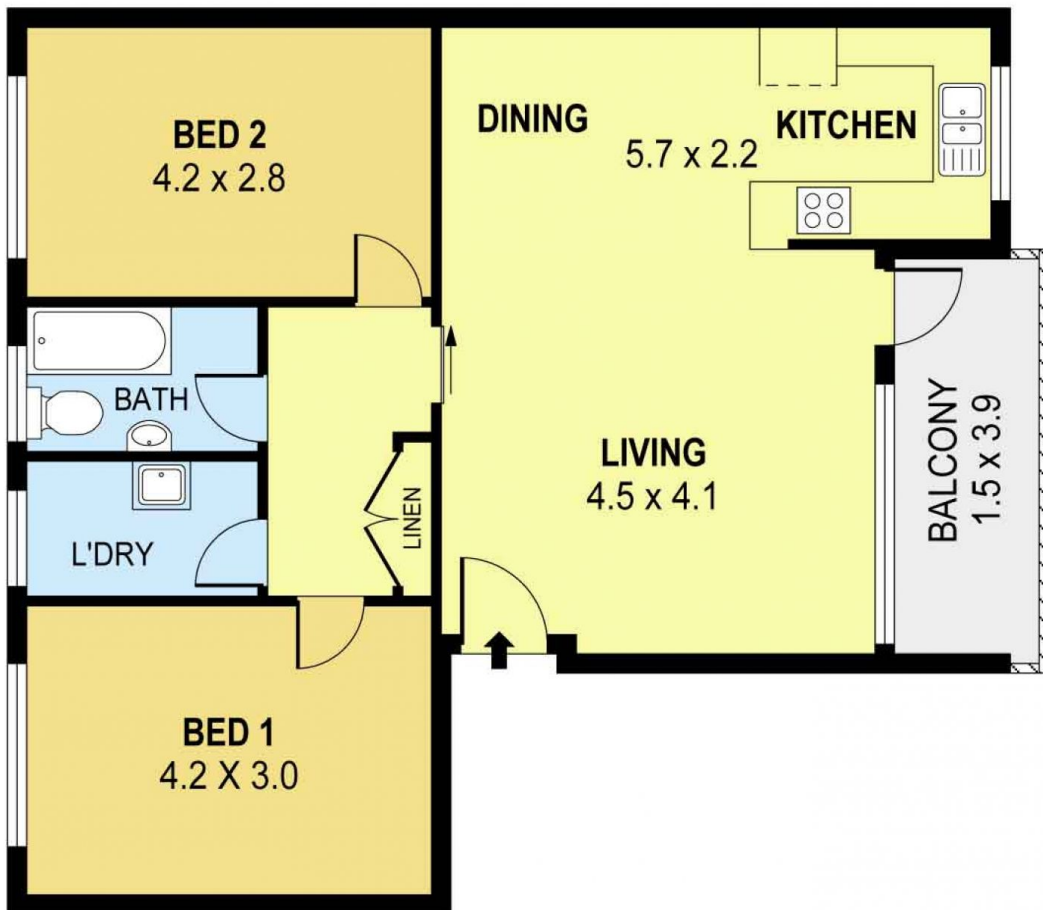
**Annette Allen**  
**02 4226 3000**



DETACHED



DETACHED



PLANS SHOWN ONLY INDICATIVE OF LAYOUT. DIMENSIONS ARE APPROXIMATE.  
Ref. No: 28154

INT : 70m<sup>2</sup>  
EXT : 6m<sup>2</sup>  
CARPORT : 13m<sup>2</sup>

UNIT 7, 12 CATHERINE STREET

GWYNNEVILLE