



22 Coronata Drive Figtree NSW

5 3 2

A rare offering in this tightly held enclave. Unassuming from the outside, the residence offers a flexible, family friendly floorplan with an impressive amount of space over two levels. A superb property for the entertainer with a growing family.

Price : \$ 1,380,000
Land Size : 604 sqm
View : <https://www.jacksonresidential.com.au/6460529>

Highlights:

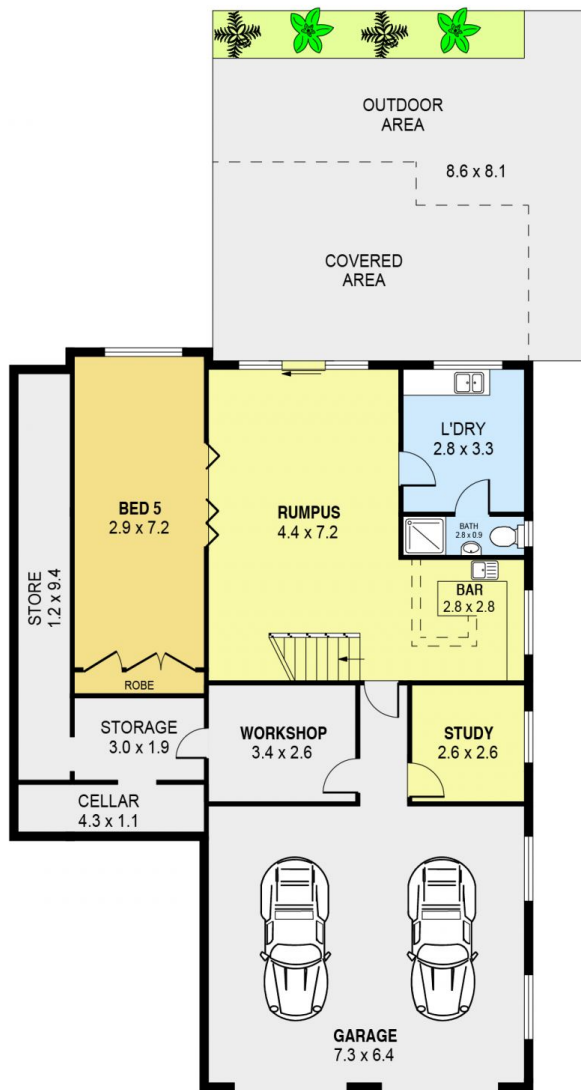
- * Well equipped kitchen with a lovely outlook
- * Spacious lounge and separate dining area
- * Main bedroom with walk in robe and en-suite
- * Balcony runs off bedrooms 1 and 2
- * Rumpus/entertainment room and wet bar downstairs opening to covered patio
- * Large bedroom/media room off rumpus
- * Office
- * Large double garage with workshop and cellar



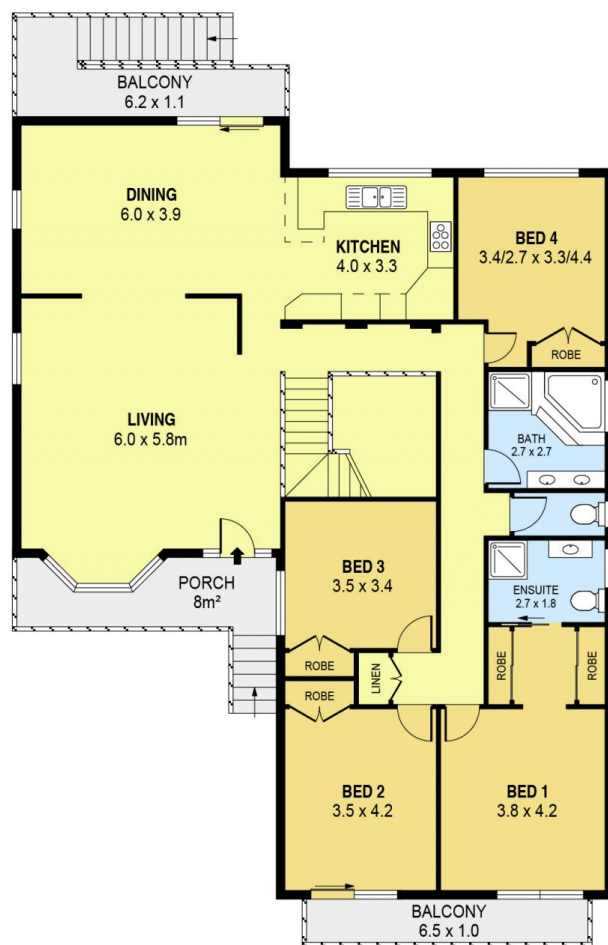
Mark Jackson
0418 603 447



Robyn Elliott
4226 3000



LOWER LEVEL



GROUND LEVEL



SCALE (METRES)

PLANS SHOWN ONLY INDICATIVE OF LAYOUT. DIMENSIONS ARE APPROXIMATE.
Ref. No: 89629

INT : 290m²
EXT : 85m²
GARAGE & WORKSHOP : 60m²

22 CORONATA DRIVE

FIGTREE