



5/5a Mt Ousley Road Fairy Meadow NSW

2 1 2

Step inside to this surprisingly spacious villa with open plan living. Conveniently located close to the freeway, shops and transport. It's bound to attract downsizers, first home buyers and investors. Currently leased to long term tenants.

Highlights:

- * Well equipped kitchen
- * Open plan living with air conditioning
- * Good sized bedrooms with air conditioning to main
- * Large bathroom
- * Low maintenance courtyard
- * Laundry and 2nd toilet off garage
- * Double garage

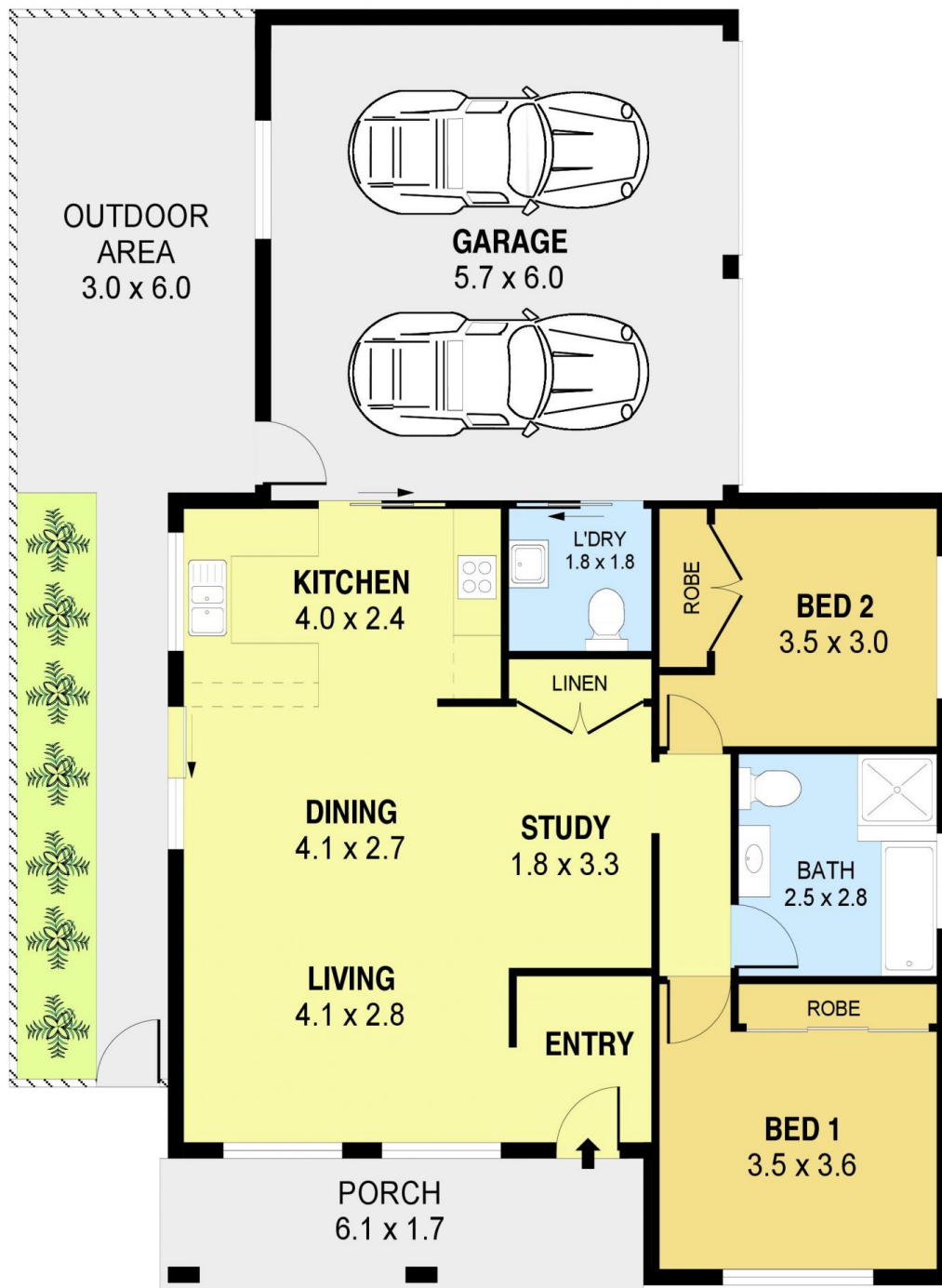
View : <https://www.jacksonresidential.com.au/6686042>



Mark Jackson
02 4226 3000



Robyn Elliott
4226 3000



PLANS SHOWN ONLY INDICATIVE OF LAYOUT. DIMENSIONS ARE APPROXIMATE.
Ref. No: 92959

INT : 82m²
EXT : 28m²
GARAGE : 34m²

5/5A MOUNT OUSLEY ROAD

FAIRY MEADOW