



6 Gowan Brae Avenue Mount Ousley NSW

3 1 1

Set amongst quality homes in a beautiful neighbourhood, this property has so much potential. Multiple living areas, 3 bedrooms and a sunroom at the back. The flexible floorplan offers a wonderful opportunity for a revamp to suit your lifestyle. A very appealing prospect located in a pretty cul-de-sac.

Price : \$ 990,000
Land Size : 613 sqm
View : <https://www.jacksonresidential.com.au/6702>
252

Highlights:

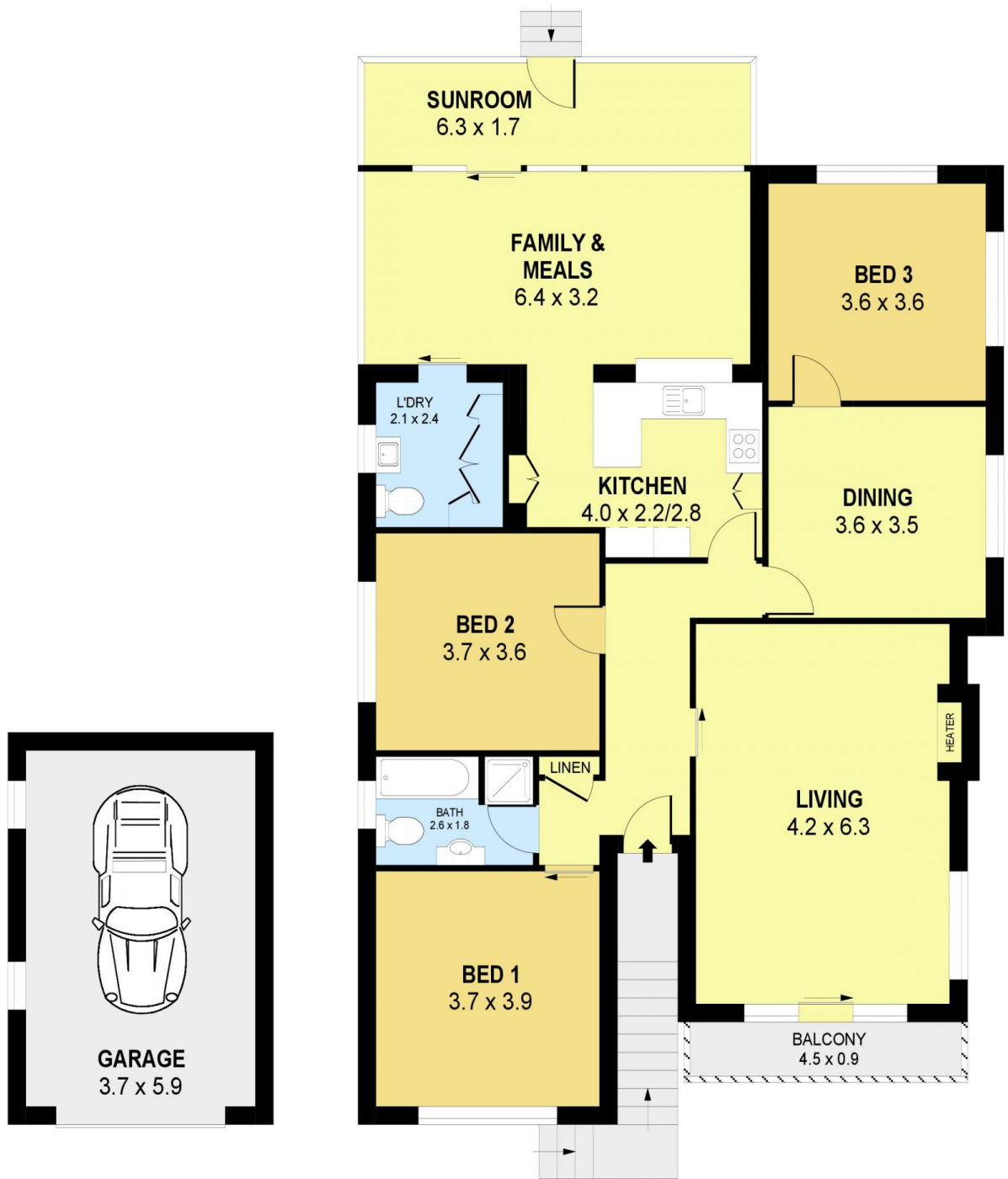
- * Flexible floorplan
- * Kitchen overlooking family room out to back yard
- * Separate lounge and dining room
- * Balcony off spacious formal lounge
- * 3 Bedrooms
- * Second w/c in laundry
- * Good sized backyard
- * Close to UOW, Tafe, CBD, schools and an easy access to freeway



Mark Jackson
02 4226 3000



Robyn Elliott
4226 3000



PLANS SHOWN ONLY INDICATIVE OF LAYOUT. DIMENSIONS ARE APPROXIMATE.
Ref. No: 93370

INT : 149m²
EXT : 4m²
GARAGE : 22m²

6 GOWAN BRAE AVENUE

MOUNT OUSLEY