



7/12 Catherine Street Gwynneville NSW

2 1 1

Great location

- * 2 bedroom
- * internal laundry
- * L shaped lounge/dining
- * balcony off living room
- * timber look floors
- * Combined shower/bath
- * Covered car space
- * Close to village, shops, restaurants, schools, bus, train

To apply please visit <https://cutt.ly/1nW8QdN>
We do not accept 1form applications

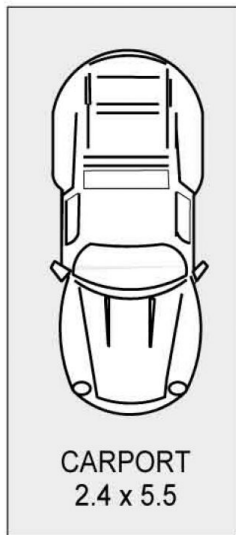
View : <https://www.jacksonresidential.com.au/6816904>



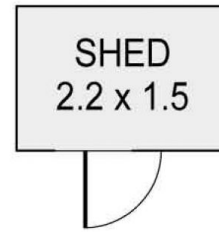
Karen White
02 4226 3000



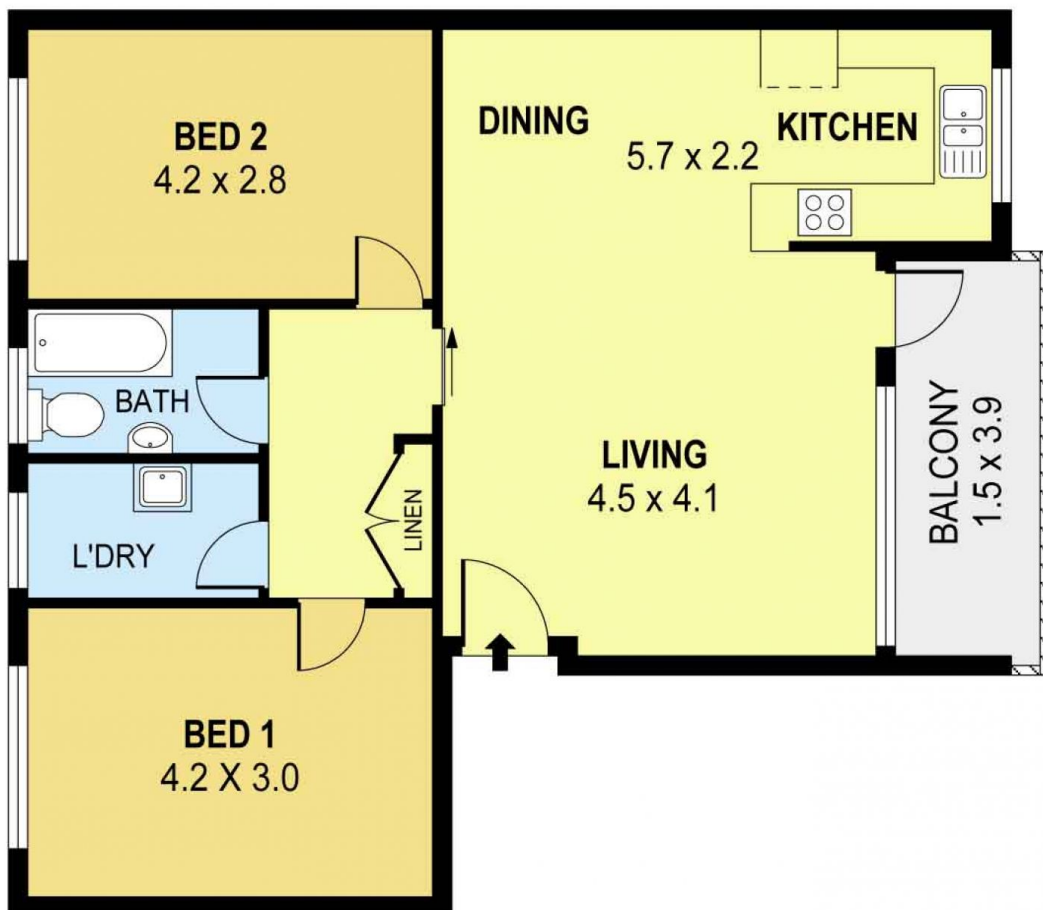
Annette Allen
02 4226 3000



DETACHED



DETACHED



PLANS SHOWN ONLY INDICATIVE OF LAYOUT. DIMENSIONS ARE APPROXIMATE.
Ref. No: 28154

INT : 70m²
EXT : 6m²
CARPORT : 13m²

UNIT 7, 12 CATHERINE STREET

GWYNNEVILLE