



228 Gipps Road Gwynneville NSW

4 2 3

Art deco style home on a corner block in the heart of Gwynneville. Retaining its classic façade, the lounge room features curved walls and character crown mouldings reminiscent of a magical era. Another typical feature is the terrace, easily accessible from the kitchen.

A short stroll to the village shops and primary schools, close to the Botanical Gardens, UOW, Tafe and both the Public and Private Hospitals.

Highlights:

- * Brick and tile home with art deco facade
- * Front door opens to a foyer
- * Wide hallway
- * Separate lounge and dining rooms
- * Eat in kitchen
- * Four bedrooms/2 bathrooms

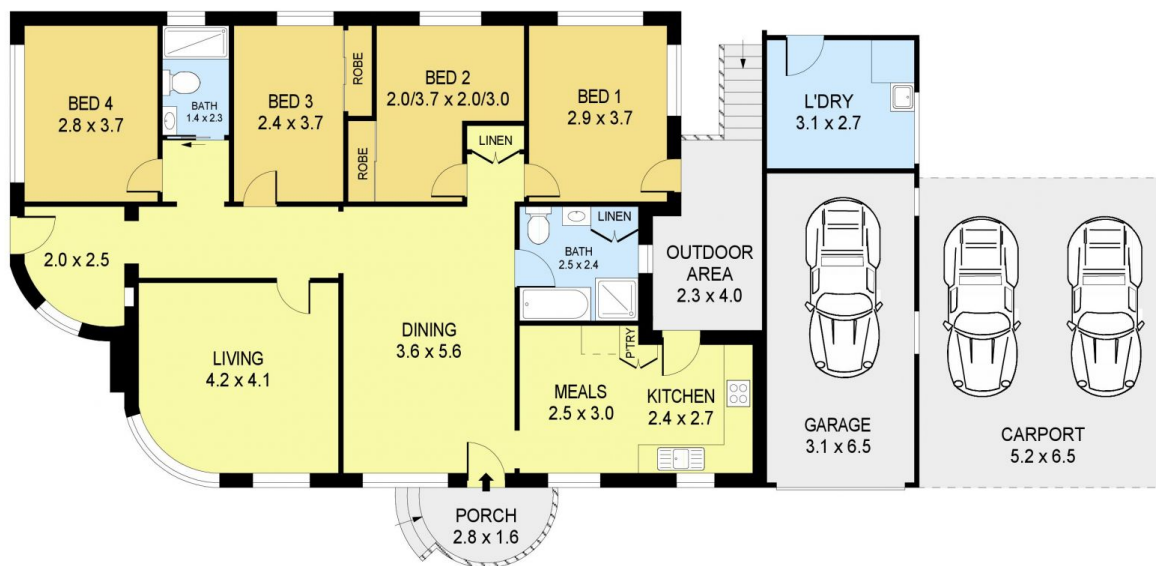
Price : \$ 1,142,000
Land Size : 607 sqm
View : <https://www.jacksonresidential.com.au/6907742>



Mark Jackson
02 4226 3000



Robyn Elliott
4226 3000



0 1 2 3 4 5 SCALE (METRES)

PLANS SHOWN ONLY INDICATIVE OF LAYOUT. DIMENSIONS ARE APPROXIMATE.
Ref. No. 92599

INT : 121m²
EXT : 12m²
GARAGE : 20m²
CARPORT : 34m²
L'DRY : 8m²

228 GIPPS ROAD

GWYNNEVILLE