



## 35 Lucinda Street Gwynneville NSW

3 1 1

This delightful character filled residence will steal your heart. At the hub is a huge open plan kitchen, dining and living room, full of light with the magical garden forming a tranquil backdrop. Two gorgeous main bedrooms, both with bay windows. The stunning bathroom is fitted with top notch inclusions. A pretty garden room is the perfect place curl up with a book in winter. This immaculate home sits prettily on one of the best streets in Gwynneville.

Walk to village shops, schools, UOW, Tafe, train, free shuttle bus around the corner.

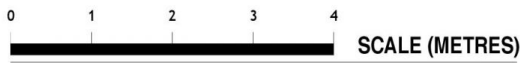
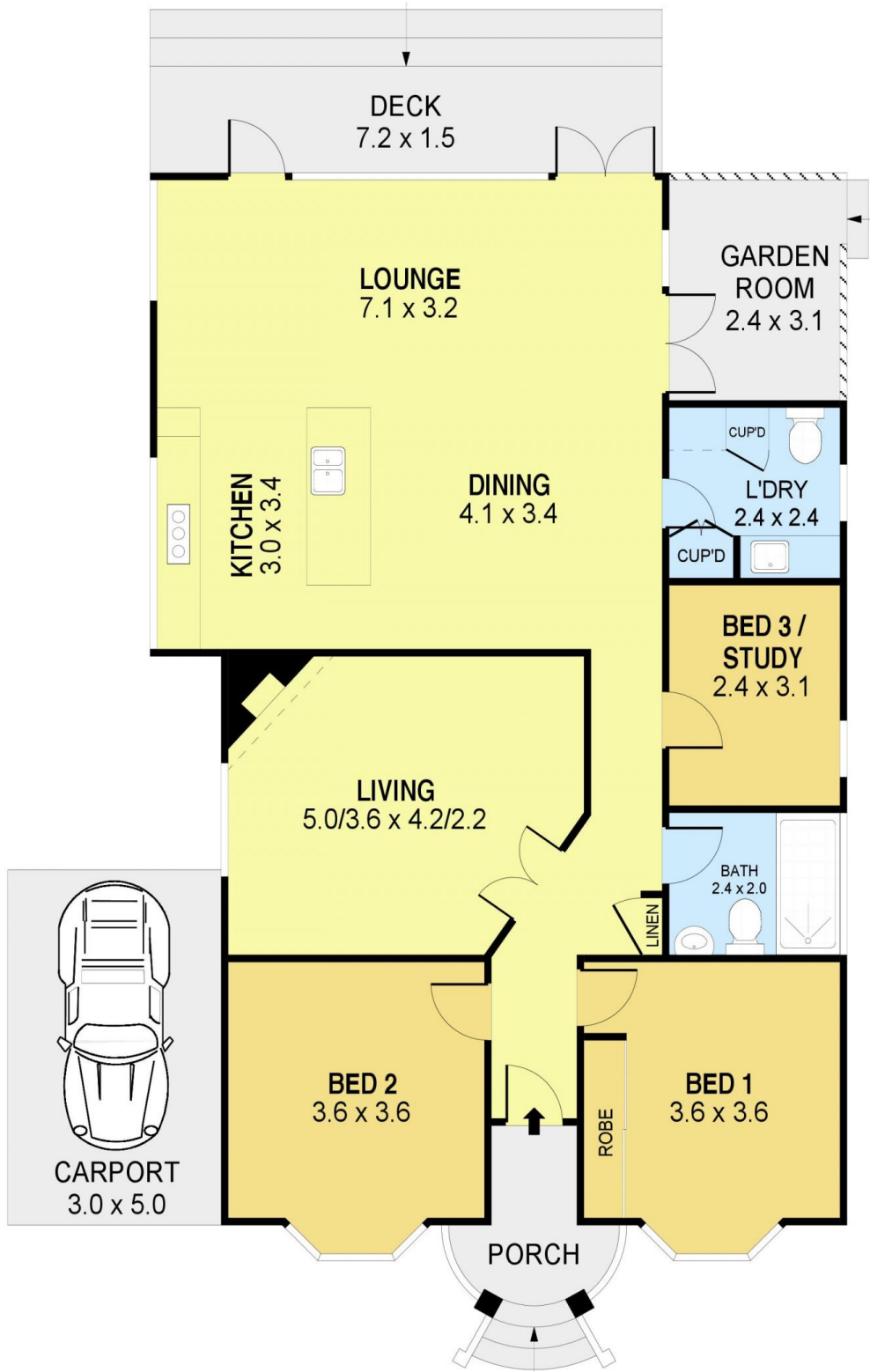
### Highlights:

- \* Two living area
- \* Sleek kitchen
- \* Bay windows to two bedrooms
- \* Polished timber floors throughout

**Price** : \$ 1,600,000  
**Land Size** : 524 sqm  
**View** : <https://www.jacksonresidential.com.au/6931>  
193



**Mark Jackson**  
02 4226 3000



PLANS SHOWN ONLY INDICATIVE OF LAYOUT. DIMENSIONS ARE APPROXIMATE.  
 Ref. No: 96058

INT : 124m<sup>2</sup>  
 EXT : 22m<sup>2</sup>  
 CARPORT : 15m<sup>2</sup>

35 LUCINDA STREET

GWYNNEVILLE