



10 England Street West Wollongong NSW

3 1 2

When a home has been cared for it shows, and this captivating property on approximately 500 square metres positively sparkles with its pristine presentation.

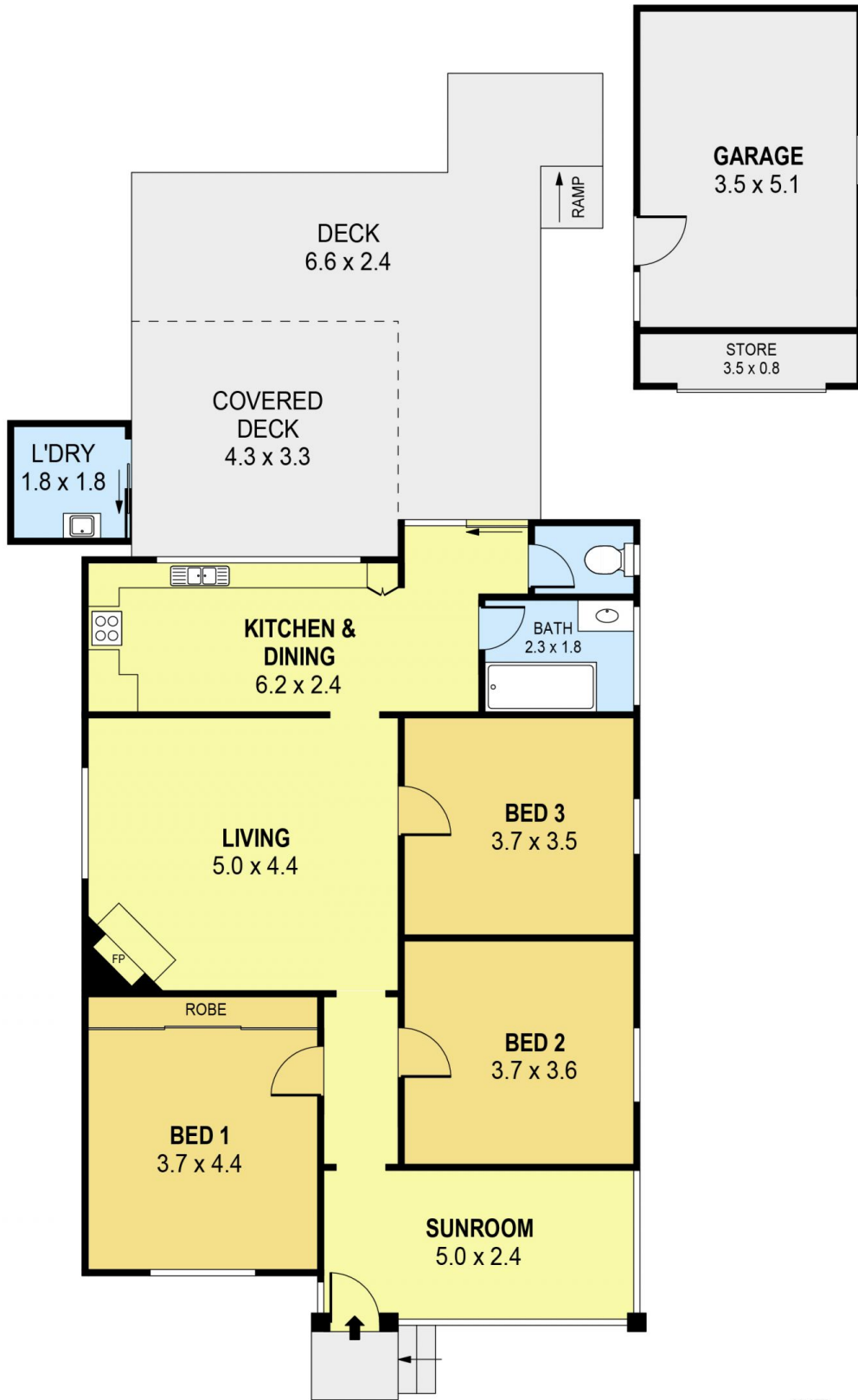
Relax and unwind by the open fireplace in the living area or entertain within the well-appointed kitchen and dining area, providing an effortless connection to the covered rear deck and garden. This idyllic spot will inspire days spent watching the kids play while you kick back and enjoy the serenity.

Within a short walk of Gilmore Park, Gwynneville Public School and local amenities. Additional features include a single garage, plantation shutters, and solid timber floors - all in a location you'll never want to leave!

Price : \$ 762,000
Land Size : 500 sqm
View : <https://www.jacksonresidential.com.au/7269532>



Mark Jackson
02 4226 3000



PLANS SHOWN ONLY INDICATIVE OF LAYOUT. DIMENSIONS ARE APPROXIMATE.
 Ref. No: 100574

INT	: 106m ²
EXT	: 45m ²
GARAGE	: 18m ²
STORE	: 03m ²
L'DRY	: 03m ²

10 ENGLAND STREET

WEST WOLLONGONG