

12/6-10 Catherine Street Gwynneville NSW

2  1  1 

This two-bedroom apartment's generous proportions offer lifestyle convenience and investment potential close to Gwynneville retail district, Wollongong Uni, Wollongong hospitals and Wiseman Park Reserve.

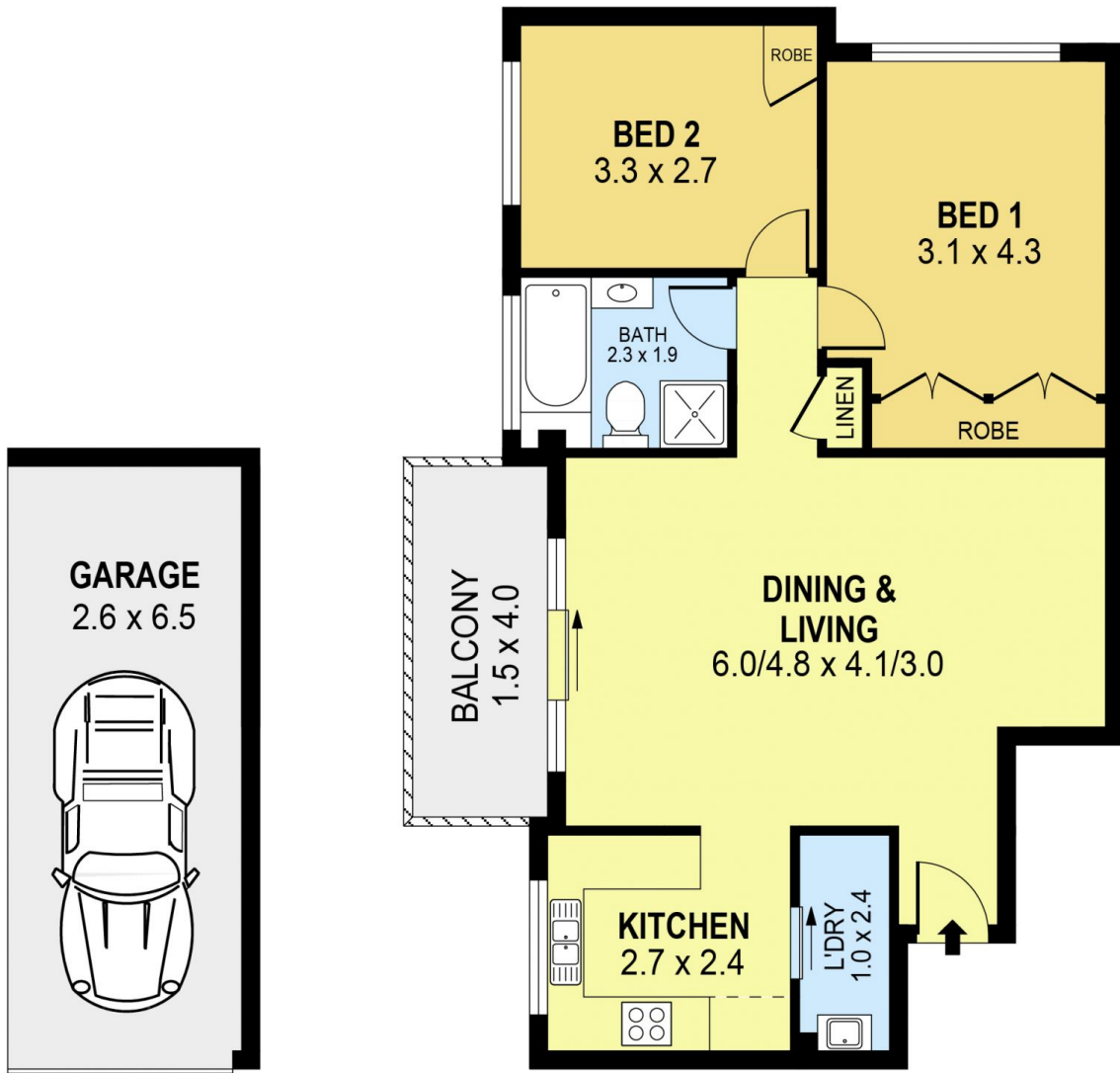
Situated in a quiet location, this unit provides a wonderfully peaceful and private retreat. The sliding doors ensure the spacious living/dining area is kept beautifully bright overlooking the vintage balcony.

The modern kitchen features plenty of bench and storage space adjacent to the internal laundry, whilst a central bathroom serves two secluded bedrooms, the main with extensive built-in robes/storage. A single garage is also included.

Price : \$ 515,000
Building Size : 65 sqm
View : <https://www.jacksonresidential.com.au/423582>



Mark Jackson
02 4226 3000



DETACHED



PLANS SHOWN ONLY INDICATIVE OF LAYOUT. DIMENSIONS ARE APPROXIMATE.
Ref. No: 101889

INT : 64m²
EXT : 6m²
GARAGE : 17m²

UNIT 12, 6-10 CATHERINE STREET

GWYNNEVILLE