



## 14 Wattle Road Woonona NSW

4 2 2

Part of a quiet area and showcasing multiple living and light-filled spaces, this single-level home has an inviting charm that greets you instantly, with a rich floorplan made practical for modern living.

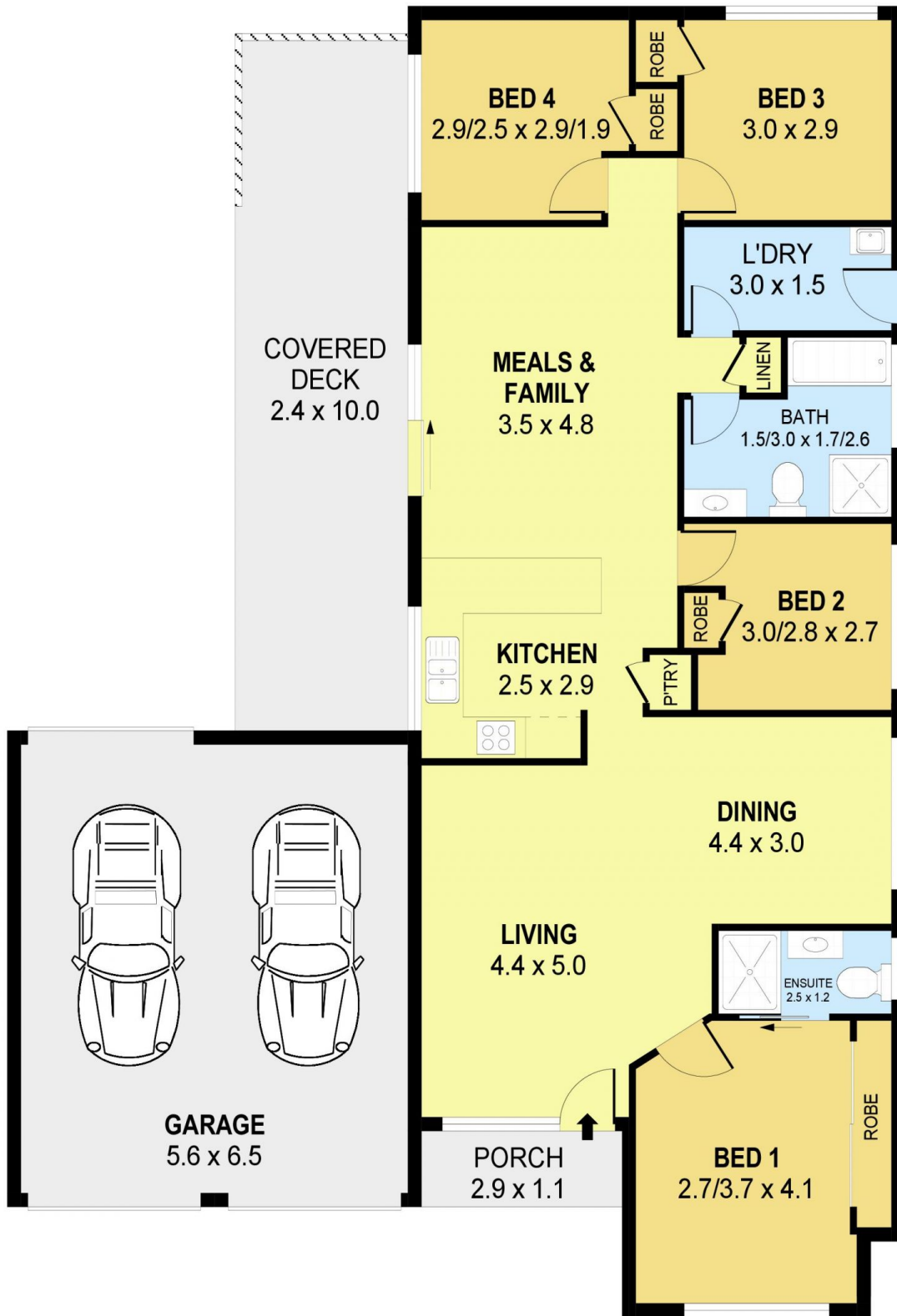
The Entrance is welcoming and leads you straight into a light, bright living and dining space. Adjoining is a modern kitchen featuring plenty of storage including a separate pantry, ceramic cooktop and dishwasher. Here, your first glimpse of the vibrant, landscaped garden is a welcome surprise out the back. Timber decking works perfectly to create an area to relax within the space during those beautiful summer days.

The home offers 3 well-proportioned bedrooms featuring built-in robes which are serviced by a central bathroom. The additional main bedroom includes an ensuite and

**Price** : \$ 1,225,000  
**Land Size** : 420 sqm  
**View** : <https://www.jacksonresidential.com.au/7437513>



**Mark Jackson**  
02 4226 3000



PLANS SHOWN ONLY INDICATIVE OF LAYOUT. DIMENSIONS ARE APPROXIMATE.  
Ref. No: 101969

INT : 118m<sup>2</sup>  
EXT : 28m<sup>2</sup>  
GARAGE : 36m<sup>2</sup>

14 WATTLE ROAD

WOONONA