



28 Charlotte Street Robertson NSW

3 1 2

Located in a picturesque street occupying 601 sqm, this contemporary country-style home invites you to step inside.

At its heart lies the central living area, enveloped by a formal living and dining room. Adjacent is the spacious kitchen complete with stainless steel appliances and offers captivating views of the beautifully landscaped gardens. Other features include 3 large bedrooms with built-ins, ducted air conditioning, a fireplace for those cold highlands nights and internal access from the double garage.

With limitless possibilities, for those who prefer a clean slate, the opportunity awaits to entirely reimagine this space into an opulent new family sanctuary.

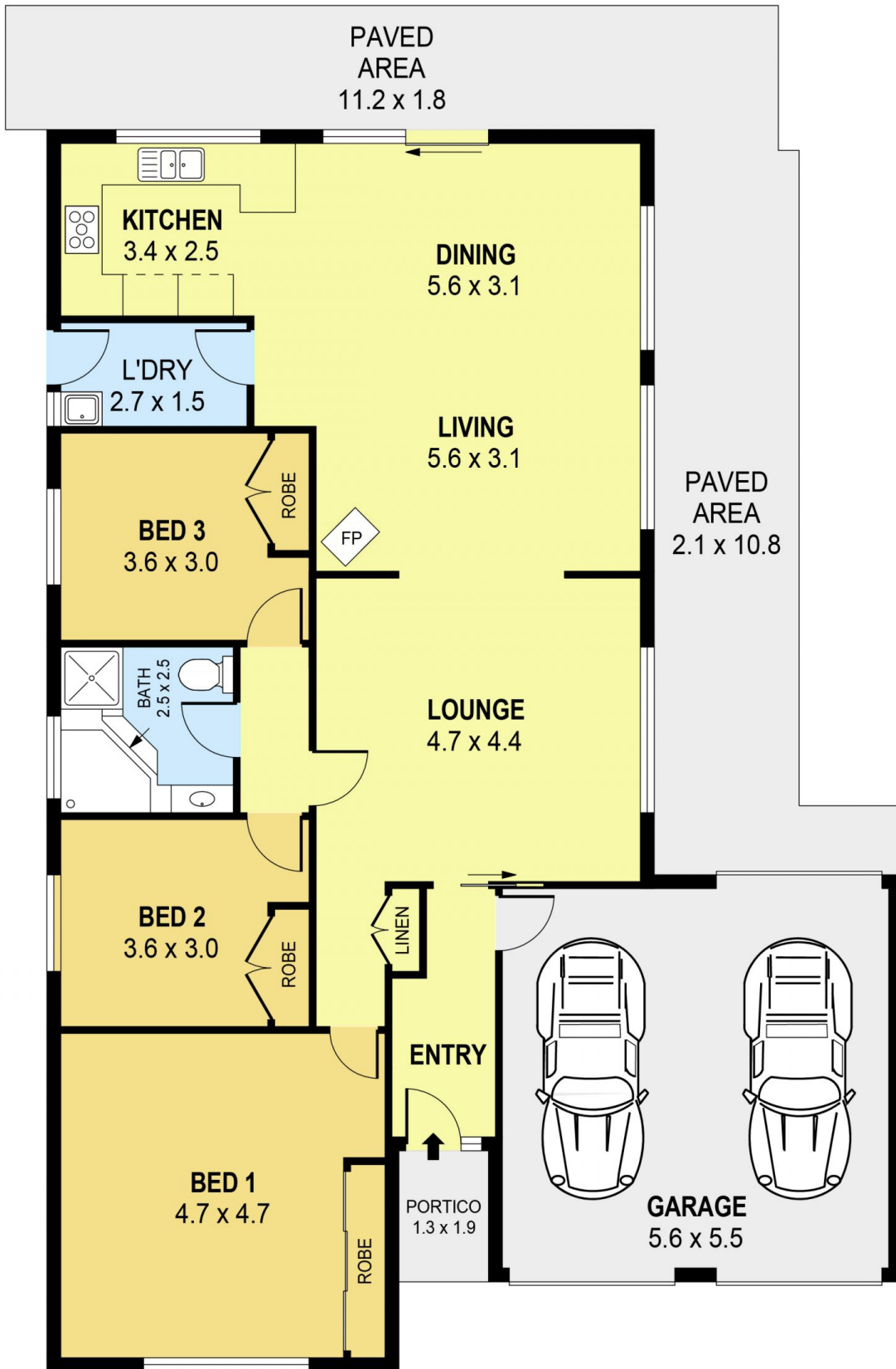
Price : \$ 805,000

Land Size : 601 sqm

View : <https://www.jacksonresidential.com.au/7749>
421



Mark Jackson
02 4226 3000



PLANS SHOWN ONLY INDICATIVE OF LAYOUT. DIMENSIONS ARE APPROXIMATE.
Ref. No: 105665

INT : 128m²
EXT : 47m²
GARAGE : 31m²

28 CHARLOTTE STREET

ROBERTSON