



3/6 Sproule Crescent Balgownie NSW

3 2 2

Experience the epitome of convenience, elegance, and dual space living within this flawlessly presented townhouse, just moments away from the vibrant allure of Balgownie town centre.

Offering both formal sophistication and relaxed comfort, the main living area embraces you with its warmth, effortlessly merging with a generously sized north-facing courtyard -an ideal haven for al fresco entertaining.

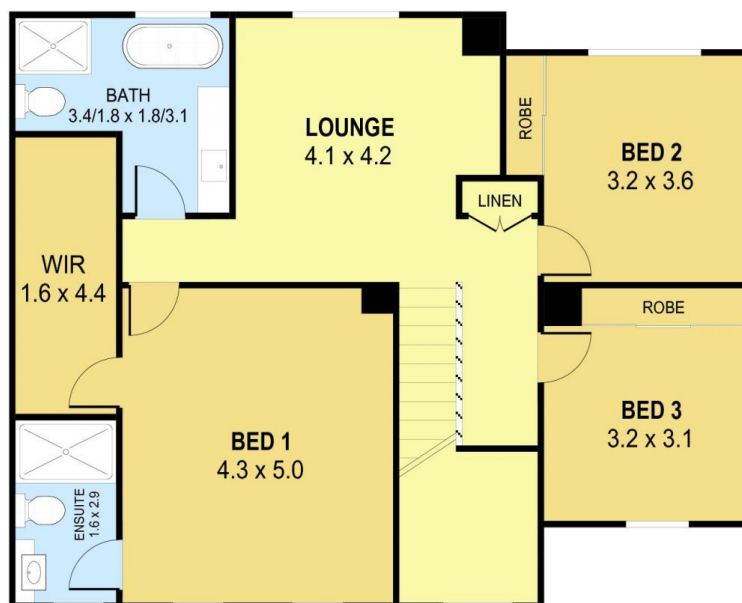
Delight in the culinary finesse that the kitchen brings, adjacent to the spacious dining area. Ascend to the upper level, where the bedroom becomes a haven of privacy and indulgence. Here, an ensuite bathroom and a large walk-in wardrobe complete a master bedroom of epic proportions.

This residence offers an effortlessly low-maintenance

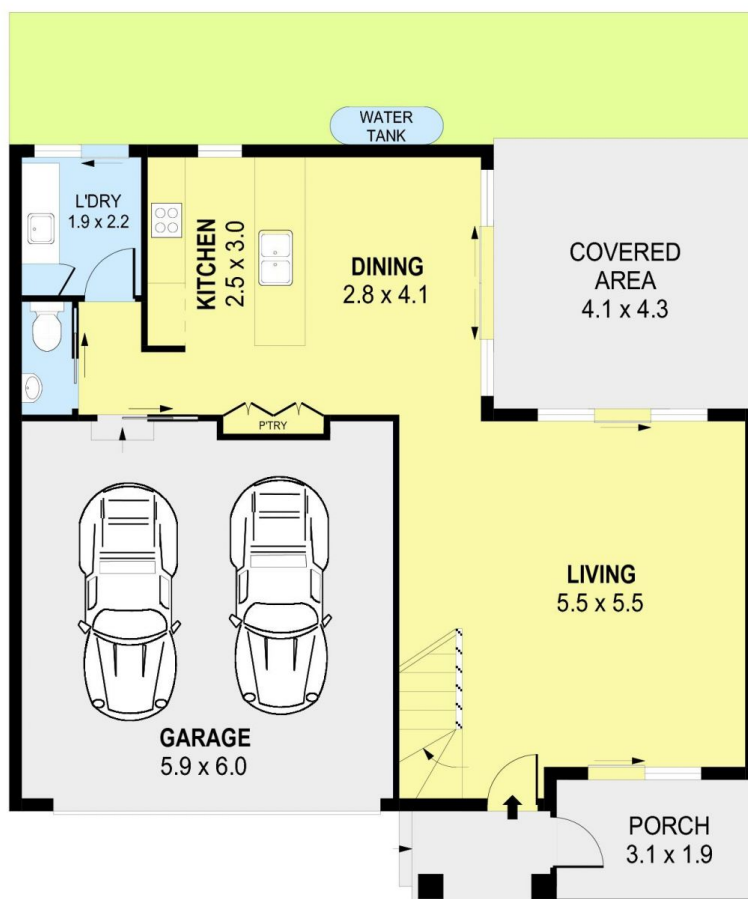
Price : \$ 1,130,000
Building Size : 123 sqm
Land Size : 249 sqm
View : <https://www.jacksonresidential.com.au/751832>



Mark Jackson
 02 4226 3000



UPPER LEVEL



GROUND LEVEL



PLANS SHOWN ONLY INDICATIVE OF LAYOUT. DIMENSIONS ARE APPROXIMATE.
Ref. No: 105922

INT : 163m²
EXT : 51m²
GARAGE : 35m²

3/6 SPROULE CRESCENT

BALGOWNIE