



## 51 Watergum Way Woonona NSW

3 2 2

With its delightful contemporary layout and alfresco area, this classic home steals the spotlight as the ultimate easy-living, single-level haven.

Low maintenance is key here - with open-plan living/dining adjoining a well-appointed kitchen, offering a free-flowing layout perfect for all stages of life.

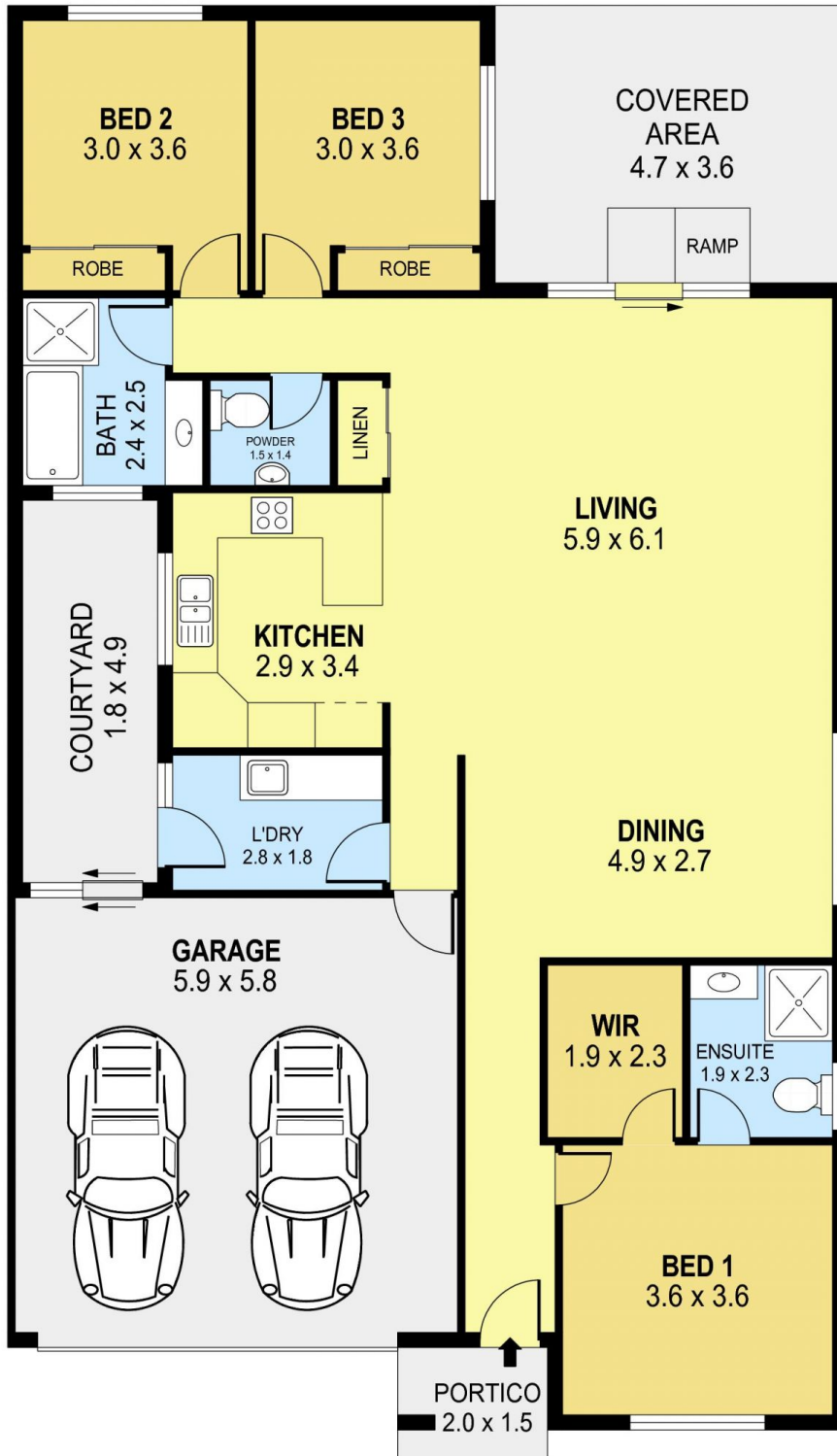
Enjoy the space within the three generous bedrooms and two bathrooms, and appreciate the light-filled aspect of the east-facing main bedroom with its large walk-in robe.

Equipped with split-system air conditioning, you can live in comfort all year round. Neutral polished tiles, a spacious laundry, and a sizeable double garage with remote and internal access are all valuable additions.

**Price** : \$ 1,250,000  
**Building Size** : 164 sqm  
**Land Size** : 363 sqm  
**View** : <https://www.jacksonresidential.com.au/763823>



**Mark Jackson**  
02 4226 3000



PLANS SHOWN ONLY INDICATIVE OF LAYOUT. DIMENSIONS ARE APPROXIMATE.  
Ref. No: 106052

INT : 130m<sup>2</sup>  
EXT : 30m<sup>2</sup>  
GARAGE : 34m<sup>2</sup>

51 WATERGUM WAY

WOONONA