



21 Crawford Avenue Gwynneville NSW

3 1 1

Put yourself in the heart of it all, with comfort for today and a location to last a lifetime. This classic home will embrace you with its warmth and charm from the moment you arrive.

With an easy-to-work-with floor plan, this updated home features a central living room and dining area, three bedrooms, a bathroom, and a large laundry with an additional shower and toilet.

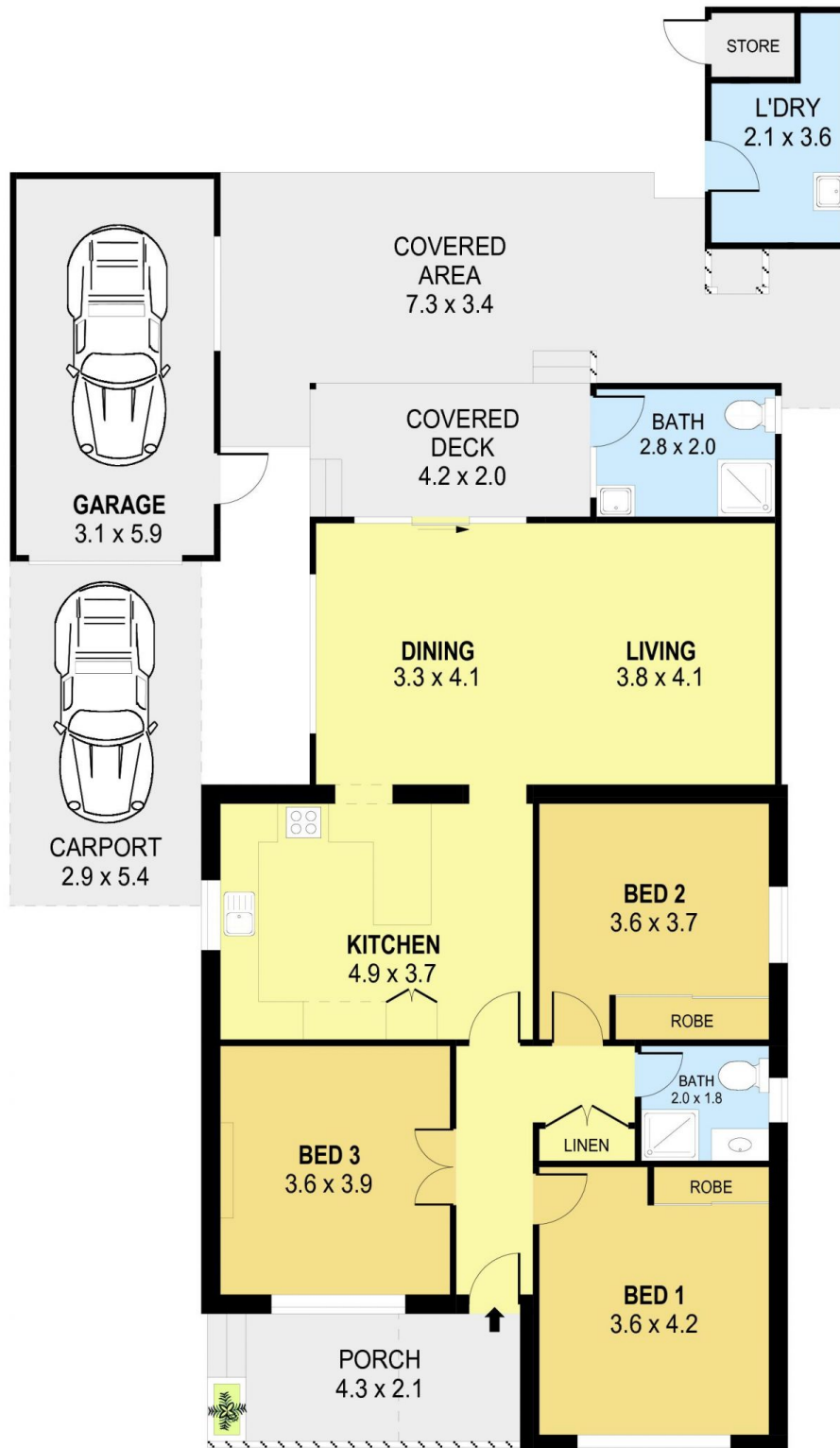
The dining area connects you to your private backyard featuring an entertainment area, gardens and ample decking, perfect for entertaining during the warm summer months.

Experience the advantages of being close to it all; Walking distance to Beaton Park Leisure Centre, Wiseman Park Bowling Club, University of Wollongong and Gwynneville

Price : \$ 975,000
Land Size : 544 sqm
View : <https://www.jacksonresidential.com.au/7854004>



Mark Jackson
02 4226 3000



0 1 2 3 4 5 **SCALE (METRES)**

PLANS SHOWN ONLY INDICATIVE OF LAYOUT. DIMENSIONS ARE APPROXIMATE.
Ref. No: 107183

INT : 112m²
EXT : 48m²
GARAGE : 18m²
CARPORT : 16m²
STORE / LAUNDRY : 8m²

21 CRAWFORD AVENUE

GWYNNEVILLE