



### 3 Craig Mor Way Keiraville NSW

4  2  2 

Offered for the first time in over 50 years, this classic home will embrace you with its warmth and charm from the moment you arrive.

The entrance is welcoming and leads you straight through to a large, light and bright living and dining room. Adjoining is a modern kitchen featuring plenty of storage, stainless steel appliances and dishwasher.

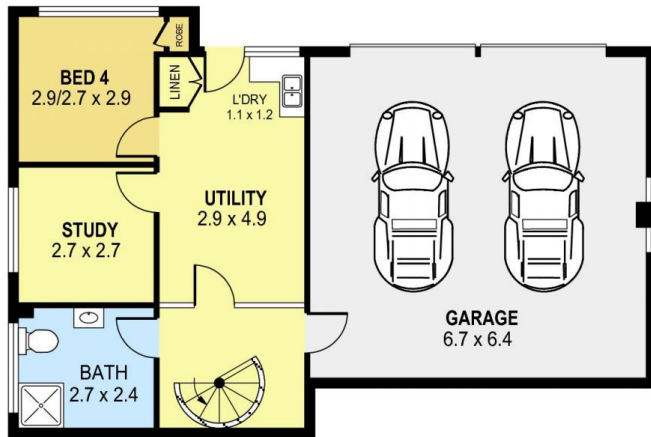
Separate downstairs areas including the fourth bedroom can double as a second living, home office or home gym, the possibilities are endless. Internal access also features from the second driveway at the rear, leading to the double garage.

This solid brick home benefits from its brilliant location, close to schools, shops, parks, and transport.

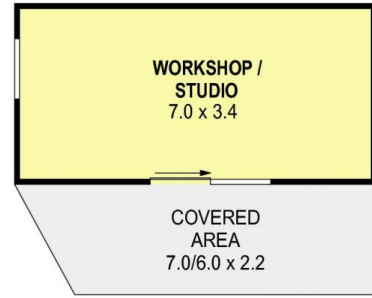
**Price** : \$ 1,225,000  
**Land Size** : 556 sqm  
**View** : <https://www.jacksonresidential.com.au/7856172>



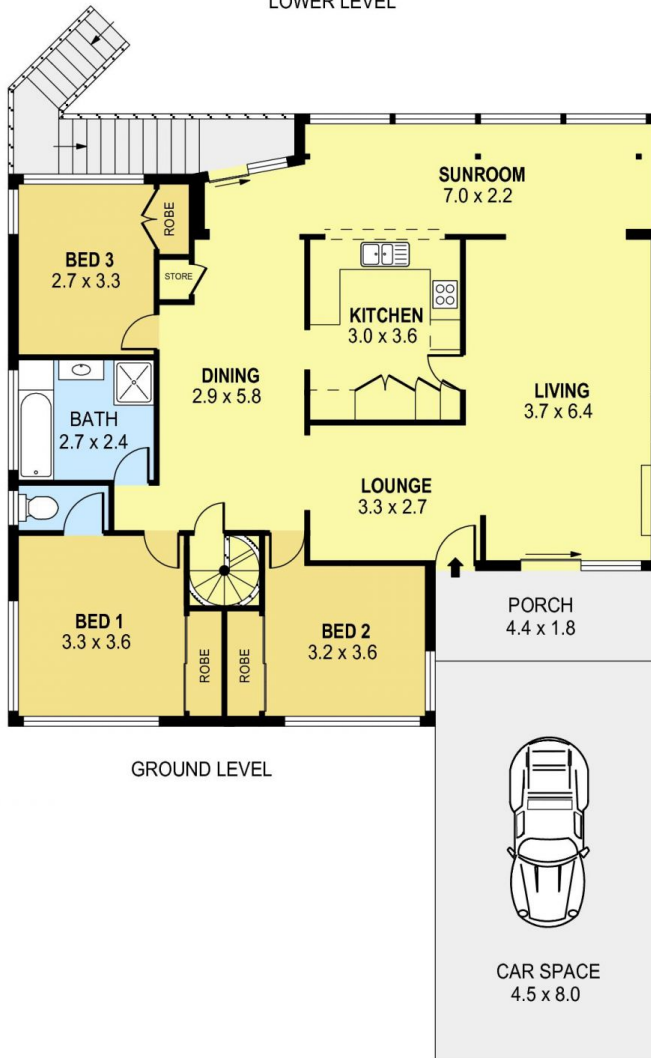
**Mark Jackson**  
02 4226 3000



LOWER LEVEL



DETACHED



GROUND LEVEL



PLANS SHOWN ONLY INDICATIVE OF LAYOUT. DIMENSIONS ARE APPROXIMATE.  
Ref. No: 107235

INT	: 173m <sup>2</sup>
EXT	: 23m <sup>2</sup>
GARAGE	: 43m <sup>2</sup>
CAR SPACE	: 36m <sup>2</sup>
DETACHED	: 24m <sup>2</sup>

3 CRAIG MORE WAY

KEIRAVILLE