



## 8 Dixon Street Fairy Meadow NSW

4  2  2 

Unassuming from the street, this family home unveils surprising spaciousness and a sleek, minimalist aesthetic that embodies modern sophistication.

The welcoming entryway sets the tone, leading through to a generously proportioned separate lounge area to an expansive open-plan living and dining space. The well-appointed kitchen, featuring ample storage and stainless steel appliances, combines efficiency with style.

There is also dual access from the main bedroom and living areas to your private backyard featuring an alfresco area, landscaped garden beds and ample decking, perfect for entertaining during the warm summer months.

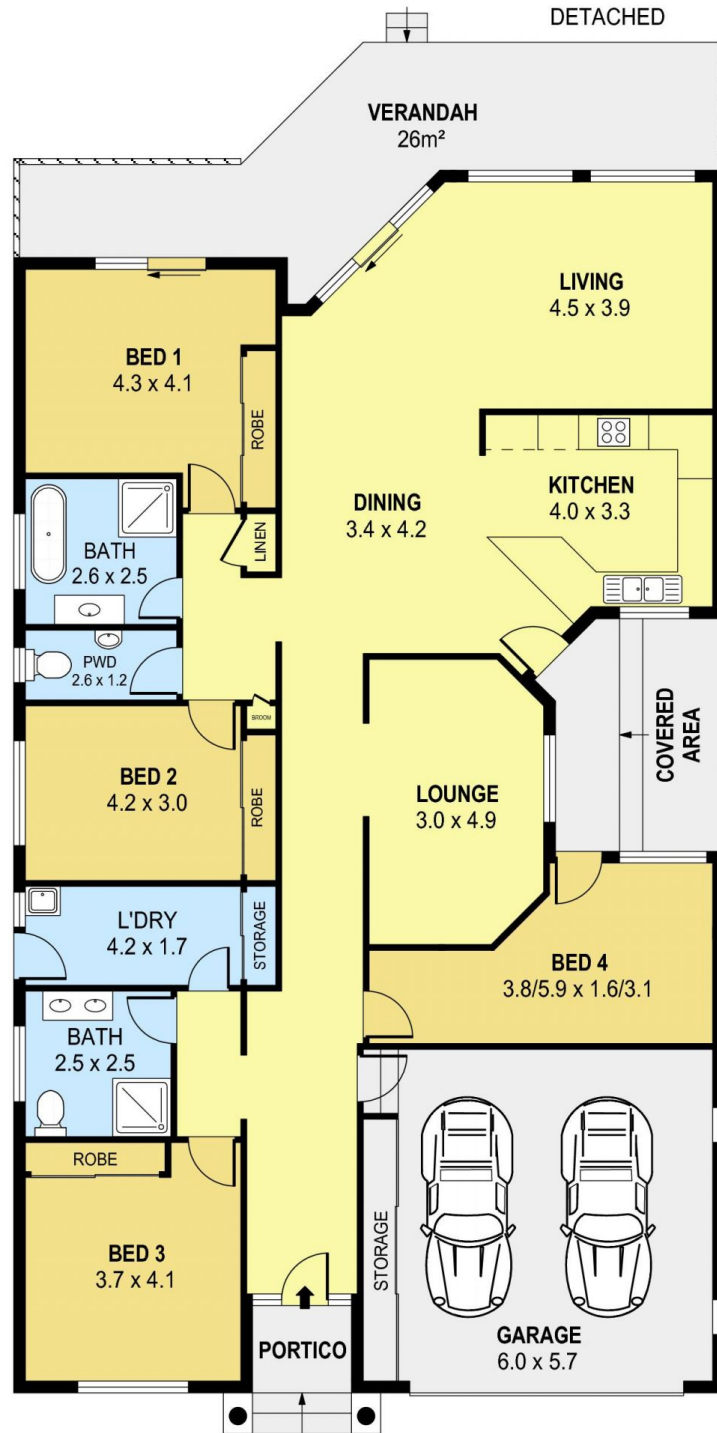
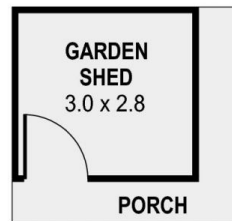
The back area is also accessible via the main bedroom and is ultra-generous in size, as the home is set on over

**Land Size** : 544 sqm

**View** : <https://www.jacksonresidential.com.au/7895839>



**Mark Jackson**  
02 4226 3000



PLANS SHOWN ONLY INDICATIVE OF LAYOUT. DIMENSIONS ARE APPROXIMATE.  
Ref. No: 107615

INT	: 182m <sup>2</sup>
EXT	: 46m <sup>2</sup>
GARAGE	: 34m <sup>2</sup>
DETACHED	: 8m <sup>2</sup>

8 DIXON STREET

FAIRY MEADOW