

3 Donald Street Fairy Meadow NSW

3  2  2 

An irresistible haven of relaxation in a prime position in Fairy Meadow, this single-level, modern sanctuary is set to impress.

Superbly presented both inside and out, the home's original charms blend perfectly with contemporary enhancements, from open-plan living and built-in robes to an oversized kitchen. The generous bedrooms offer quiet refuge, including the main with a private ensuite.

The outdoor space caters to all, with dedicated entertaining space and plenty of grass for the kids to run around. Further included is a water tank and reverse cycle air conditioning in the living area and main bedroom.

Ready for your family's enjoyment, this charming home has everything you need.

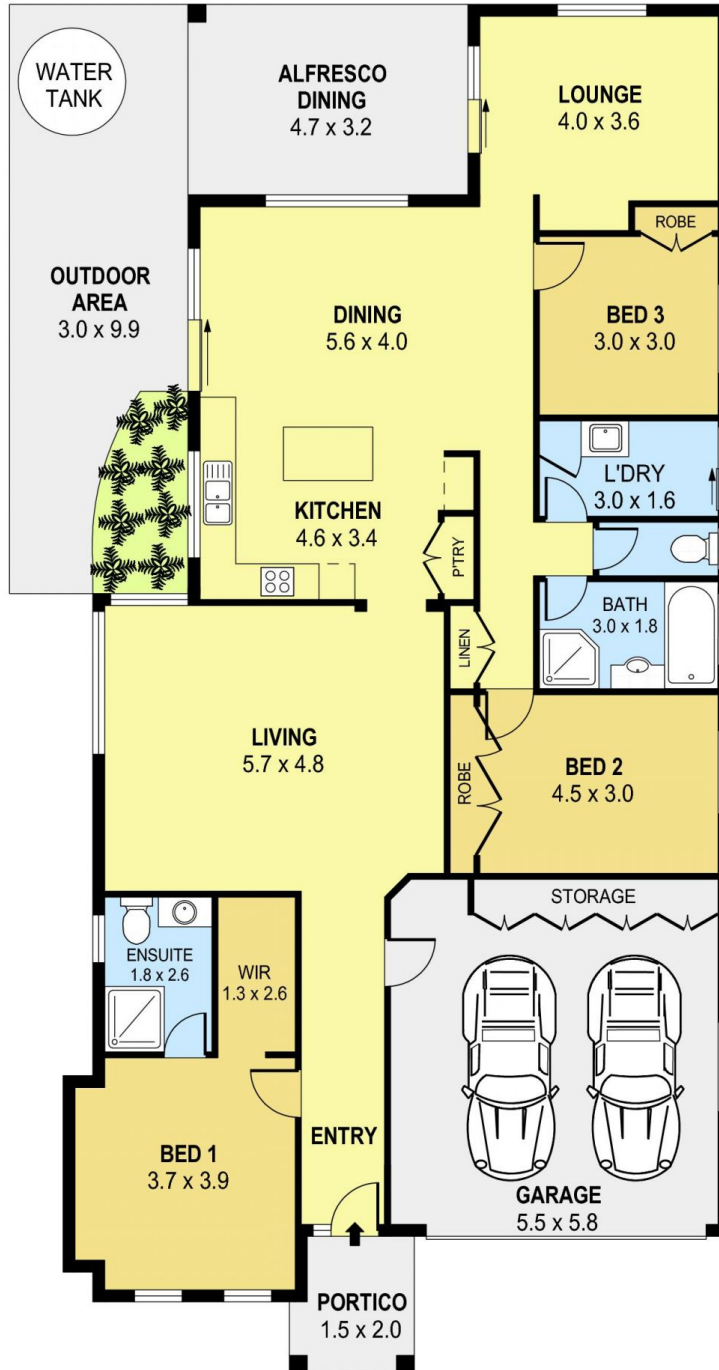
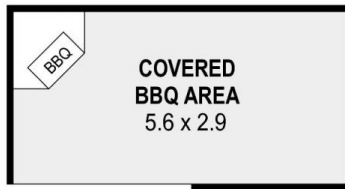
Price : \$ 1,460,000

Land Size : 526 sqm

View : <https://www.jacksonresidential.com.au/7939547>



Mark Jackson
02 4226 3000



PLANS SHOWN ONLY INDICATIVE OF LAYOUT. DIMENSIONS ARE APPROXIMATE.
Ref. No: 108384

INT : 150m²
EXT : 44m²
GARAGE : 32m²
BBQ AREA : 16m²

3 DONALD STREET

FAIRY MEADOW