



2 Kerrawah Avenue Figtree NSW

4 2 1

Set on one of Figtree's peaceful streets, this split-level home offers 562 sqm (approx.) for complete freedom to renovate or extend.

The same family has owned the home since its inception. Solid in its construction and generous in proportions, it features four bedrooms, formal and informal living zones, and a large kitchen with dishwasher upstairs. Downstairs you will find a rumpus/games room with bar and over-sized laundry, all flowing out to an undercover area and deep, north-facing backyard.

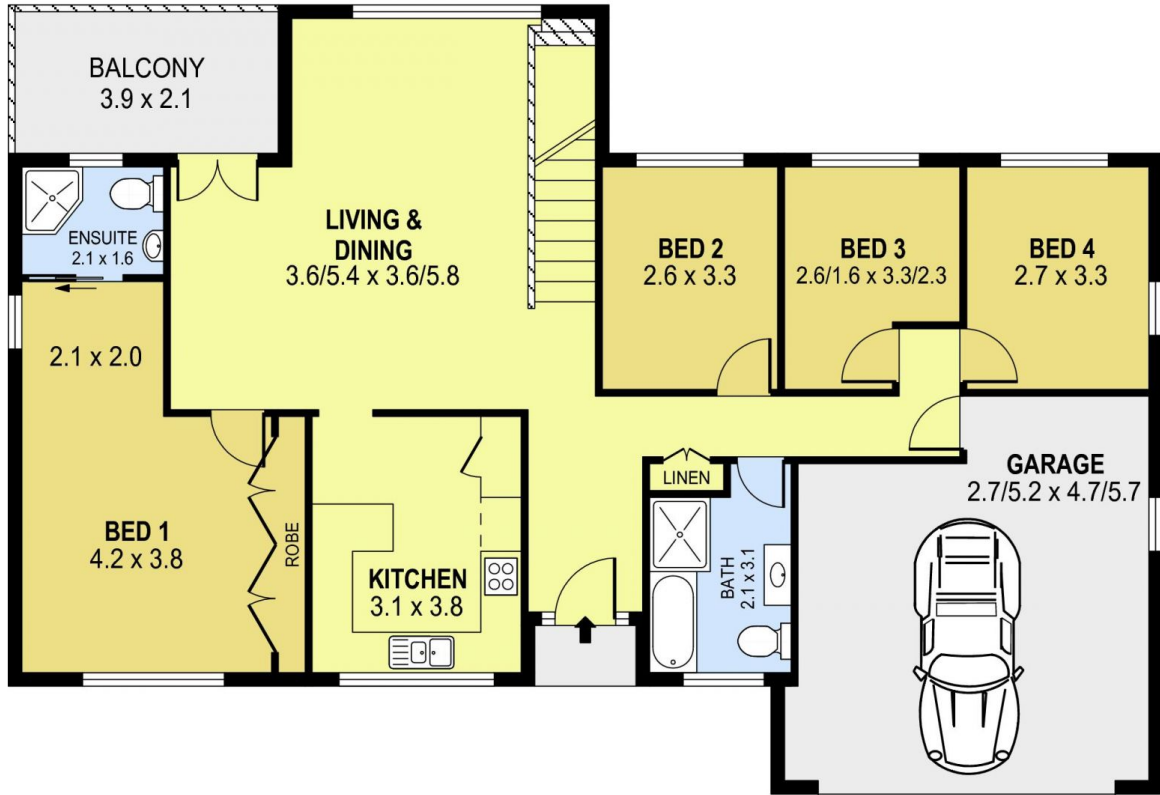
Set back from the street, there is a sizeable front yard and parking for multiple cars in the drive. Additional features include a sizeable garage with a remote and a water tank.

[For full version visit the website](https://www.jacksonresidential.com.au)

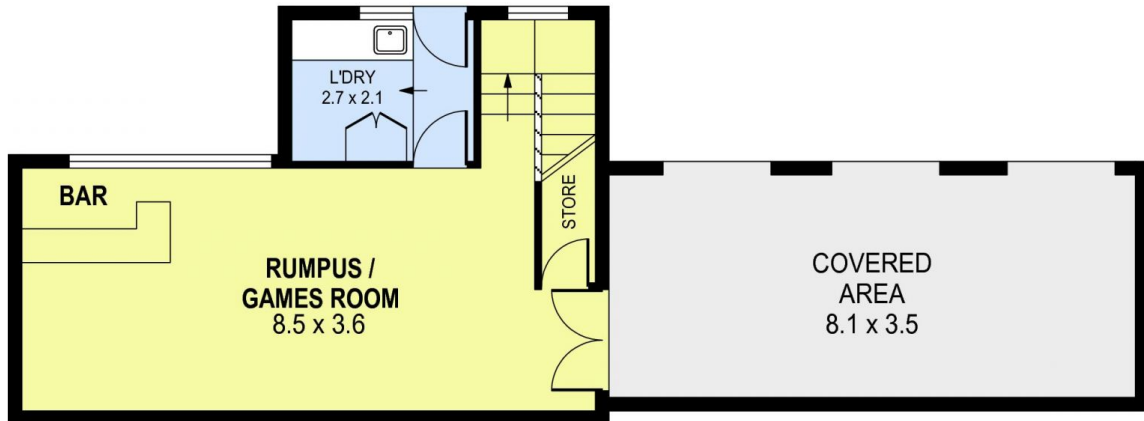
Type : House
Land Size : 562 sqm
View : <https://www.jacksonresidential.com.au/sale/nsw/wollongong-illawarra/figtree/residential/house/8373510>



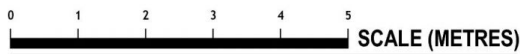
Mark Jackson
02 4226 3000



GROUND LEVEL



LOWER LEVEL



PLANS SHOWN ONLY INDICATIVE OF LAYOUT. DIMENSIONS ARE APPROXIMATE.
Ref. No: 06041

INT : 154m²
EXT : 38m²
GARAGE : 27m²

2 KERRAWAH AVENUE

FIGTREE